

MAKING MODERN LIVING POSSIBLE



Catalogue

Spare parts and accessories

For Danfoss commercial compressors



<http://cc.danfoss.com>

| | | | |
|--|-----------|---|-----------|
| Introduction | 3 | Spare parts and accessory for VSH / VZH | 19 |
| Packaging types | 3 | Solder sleeve adapter sets | 19 |
| Ordering quantities | 3 | Coil | 19 |
| Spare parts and accessory for all compressors | 4 | Valve Body | 19 |
| Rotolock adapters | 5 | Acoustic hoods | 20 |
| Gaskets and gasket sets | 5 | Mounting kits | 20 |
| Solder sleeves & Rotolock connector | 5 | Terminal boxes and accessories | 20 |
| Rotolock nuts | 5 | LCP's | 20 |
| Rotolock angle adapters and sets | 6 | Fans | 21 |
| Rotolock service valves and valve sets (without gasket) | 6 | Control card | 21 |
| Crankcase heater | 7 | Power cards | 21 |
| Surface sump heater | 7 | Accessory bags | 21 |
| PTC heater | 8 | Relays card | 21 |
| Discharge thermostat kit | 8 | Converters | 22 |
| Lubricants / oils | 8 | Switch mode power modules | 22 |
| Miscellaneous | 8 | Spare parts and accessory for MT / MTZ / NTZ | 23 |
| Spare parts and accessory for SH / SM / SY / SZ / WSH / | | Single phase PSC starting kits | 23 |
| PSH | 9 | Single phase CSR starting kits | 23 |
| Solder sleeve adapter sets | 9 | Single phase CSR starting kits, prewired box | 24 |
| 3 phase soft start equipment | 9 | 3 phase soft start equipment | 24 |
| Motor protection modules and transformers | 9 | Relays and capacitors | 24 |
| Acoustic hoods | 10 | Acoustic hoods | 24 |
| Mounting kits | 10 | Mounting kits | 24 |
| Terminal boxes and accessories | 11 | Terminal boxes, covers & T-block connectors | 25 |
| Suction header restrictors for tandem | 11 | Tandem kits | 25 |
| Suction washers for tandem | 11 | Spare parts and accessory for VTZ | 26 |
| Tandem kits including suction header restrictor and suction | | Acoustic hoods | 26 |
| and discharge tees | 12 | Mounting kits | 26 |
| Tandem kits including suction washer, rigid spacers and oil | | Terminal boxes, covers & T-block connectors | 26 |
| connection sleeves | 12 | LCP's | 26 |
| Trio kits | 12 | Control card | 27 |
| Quadro kits | 12 | Relays card | 27 |
| Oil equalisation adapters | 13 | Converters | 27 |
| Sensors & cables | 13 | Alpha numerical list | 28 |
| Communication tool | 13 | | |
| Spare parts and accessory for H / HHP | 14 | | |
| Solder sleeve adapter sets | 14 | | |
| Run capacitors | 14 | | |
| Start capacitors for CSR wiring | 14 | | |
| Starting relays for CSR wiring | 15 | | |
| Mounting kits | 15 | | |
| Acoustic hoods | 15 | | |
| IP54 upgrade kit | 15 | | |
| Terminal box and accessories | 15 | | |
| Spare parts and accessory for MLZ / MLM / LLZ | 16 | | |
| Solder sleeve adapter sets | 16 | | |
| Rotolock nuts and sleeves kit | 16 | | |
| Magnetic discharge non return valve | 16 | | |
| Run capacitors for PSC wiring | 16 | | |
| Start capacitors for CSR wiring | 17 | | |
| Starting relays for CSR wiring | 17 | | |
| IP54 upgrade kits | 17 | | |
| Mounting kits | 17 | | |
| Acoustic hoods | 18 | | |
| Terminal box and accessories | 18 | | |
| Manifolding service kit | 18 | | |

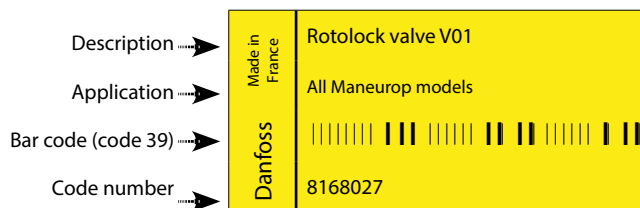
Packaging types

Accessories and spare parts from Danfoss Commercial Compressors (DCC) are distributed as Single packs, Multipacks and Industry packs.

Single pack

One part (or not set of parts) in a cardboard box or blister.

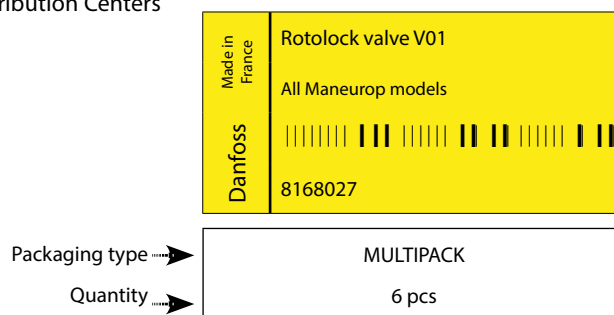
Code number 77xxxxx or 81xxxxx or 120Zxxxx or 118Uxxxx



Multipack

A quantity of Single packs packed together. Code number 77xxxxx or 81xxxxx or 120Zxxxx or 118Uxxxx. Mainly dedicated to Danfoss Distribution Centers and wholesale customers.

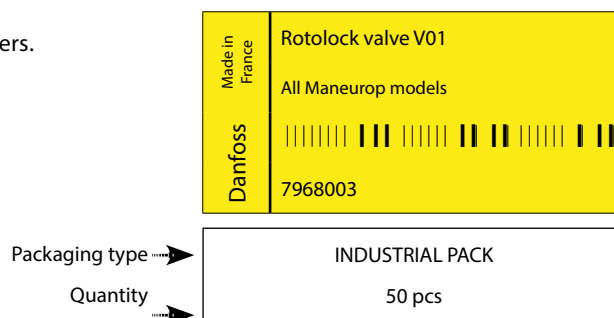
Danfoss Distribution centers or wholesalers can break up a multipack into Single packs, each having the appropriate label.



Industry pack

A quantity of identically product in bulk packaging. Code number 79xxxxx or 120Zxxxx or 118Uxxxx. Mainly dedicated to OEM customers.

Industry packs can not be broken up into Single packs.



Ordering quantities

The pack sizes as listed in this catalogue are relevant for customers ordering directly from the DCC factory. DCC strictly applies the indicated pack sizes for multipacks and industry packs.

E.g; a multipack with a pack size of 6 can be ordered from the DCC factory only in quantities of 6, 12, 18...



SH / SM / SY / SZ & WSH ranges



PSH range



H & HHP ranges



MLZ & MLM range



LLZ range



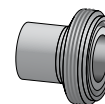
VSH & VZH ranges



MT / MTZ / MPZ & NTZ ranges



VTZ range

Rotolock adapters


| Code n° | Description | Application | Packaging | Pack size |
|----------|--|--|-----------|-----------|
| 120Z0365 | Rotolock adapter (1" Rotolock, 1/2" ODF) | Models with 1/2" ODF on Danfoss scroll models | Multipack | 10 |
| 120Z0366 | Rotolock adapter (1"1/4 Rotolock, 3/4" ODF) | Models with 3/4" ODF on Danfoss scroll models | Multipack | 10 |
| 120Z0367 | Rotolock adapter (1"1/4 Rotolock, 7/8" ODF) | Models with 7/8" ODF on Danfoss scroll models | Multipack | 10 |
| 120Z0364 | Rotolock adapter (1"3/4 Rotolock, 1"1/8 ODF) | Models with 1"1/8 ODF on Danfoss scroll models | Multipack | 10 |
| 120Z0431 | Rotolock adapter (1"3/4 Rotolock, 1"3/8 ODF) | Models with 1"3/8 ODF on Danfoss scroll models | Multipack | 10 |
| 120Z0432 | Rotolock adapter (2"1/4 Rotolock, 1"5/8 ODF) | Models with 1"5/8 ODF on Danfoss scroll models | Multipack | 10 |

Gaskets and gasket sets


| Code n° | Description | Application | Packaging | Pack size |
|---------|--|--|---------------|-----------|
| 8156130 | Gasket, G01, 1" | Models with 1" rotolock connection on all models | Multipack | 10 |
| 7956001 | Gasket, G01, 1" | | Industry pack | 50 |
| 8156131 | Gasket, G09, 1"1/4 | Models with 1"1/4 rotolock connection on all models | Multipack | 10 |
| 7956002 | Gasket, G09, 1"1/4 | | Industry pack | 50 |
| 8156132 | Gasket, G07, 1"3/4 | Models with 1"3/4 rotolock connection on all models | Multipack | 10 |
| 7956003 | Gasket, G07, 1"3/4 | | Industry pack | 50 |
| 8156133 | Gasket, G08, 2"1/4 | Models with 2"1/4 rotolock connection on Danfoss scroll models | Multipack | 10 |
| 7956004 | Gasket, G08, 2"1/4 | | Industry pack | 50 |
| 8156009 | Gasket set, 1", 1"1/4, 1"3/4, OSG gaskets black & white | All 1-2-4 cylinder models | Multipack | 10 |
| 8156013 | Gasket set, 1"1/4, 1"3/4, 2"1/4, OSG gaskets black & white | All rotolock models on Danfoss scroll models | Multipack | 10 |

Solder sleeves & Rotolock connector


| Code n° | Description | Application | Packaging | Pack size |
|---------|---|---------------------------------------|---------------|-----------|
| 8153010 | Solder sleeve, P01, (1" Rotolock, 3/8" ODF) | Models with 1" rotolock connection | Multipack | 10 |
| 7953004 | Solder sleeve, P01, (1" Rotolock, 3/8" ODF) | | Industry pack | 50 |
| 8153007 | Solder sleeve, P06, (1" Rotolock, 1/2" ODF) | | Multipack | 10 |
| 7953009 | Solder sleeve, P06, (1" Rotolock, 1/2" ODF) | | Industry pack | 50 |
| 8153008 | Solder sleeve, P04, (1"1/4 Rotolock, 3/4" ODF) | Models with 1"1/4 rotolock connection | Multipack | 10 |
| 7953007 | Solder sleeve, P04, (1"1/4 Rotolock, 3/4" ODF) | | Industry pack | 50 |
| 8153012 | Rotolock connector, P05, (1"1/4 Rotolock, 7/8" ODS) | | Multipack | 10 |
| 7953008 | Rotolock connector, P05, (1"1/4 Rotolock, 7/8" ODS) | | Industry pack | 50 |
| 8153011 | Solder sleeve, P09, (1"1/4 Rotolock, 5/8" ODF) | Models with 1"3/4 rotolock connection | Multipack | 10 |
| 7953011 | Solder sleeve, P09, (1"1/4 Rotolock, 5/8" ODF) | | Industry pack | 50 |
| 8153004 | Solder sleeve, P02, (1"3/4 Rotolock, 1"1/8 ODF) | | Multipack | 10 |
| 7953005 | Solder sleeve, P02, (1"3/4 Rotolock, 1"1/8 ODF) | | Industry pack | 50 |
| 8153013 | Solder sleeve, P07, (1"3/4 Rotolock, 7/8" ODF) | Models with 2"1/4 rotolock connection | Multipack | 10 |
| 7953010 | Solder sleeve, P07, (1"3/4 Rotolock, 7/8" ODF) | | Industry pack | 50 |
| 8153003 | Solder sleeve, P10, (1"3/4 Rotolock, 1"3/8 ODF) | | Multipack | 10 |
| 8153006 | Solder sleeve, P03, (2"1/4 Rotolock, 1"5/8 ODF) | | Industry pack | 50 |
| 7953006 | Solder sleeve, P03, (2"1/4 Rotolock, 1"5/8 ODF) | Models with 2"1/4 rotolock connection | Multipack | 10 |
| 8153005 | Solder sleeve, P08, (2"1/4 Rotolock, 1"3/8 ODF) | | Industry pack | 50 |

Rotolock nuts


| Code n° | Description | Application | Packaging | Pack size |
|----------|---------------------|---------------------------------------|---------------|-----------|
| 8153122 | Rotolock nut, 1" | Models with 1" rotolock connection | Multipack | 10 |
| 7953001 | Rotolock nut, 1" | | Industry pack | 50 |
| 8153123 | Rotolock nut, 1"1/4 | Models with 1"1/4 rotolock connection | Multipack | 10 |
| 7953002 | Rotolock nut, 1"1/4 | | Industry pack | 50 |
| 8153124 | Rotolock nut, 1"3/4 | Models with 1"3/4 rotolock connection | Multipack | 10 |
| 7953003 | Rotolock nut, 1"3/4 | | Industry pack | 50 |
| 8153126 | Rotolock nut, 2"1/4 | Models with 2"1/4 rotolock connection | Multipack | 10 |
| 120Z0047 | Rotolock nut, 2"1/4 | | Industry pack | 50 |

Rotolock angle adapters and sets


| Code n° | Description | Application | Packaging | Pack size |
|---------|--|---------------------------------------|-----------|-----------|
| 8168004 | Angle adapter, C01 (1" Rotolock, 3/8" ODF) | Models with 1" rotolock connection | Multipack | 6 |
| 8168007 | Angle adapter, C06 (1" Rotolock, 1/2" ODF) | | Multipack | 6 |
| 8168006 | Angle adapter, C04 (1"1/4 Rotolock, 3/4" ODF) | | Multipack | 6 |
| 8168009 | Angle adapter, C09 (1"1/4 Rotolock, 5/8" ODF) | Models with 1"1/4 rotolock connection | Multipack | 6 |
| 8168005 | Angle adapter, C02 (1"3/4 Rotolock, 1"1/8 ODF) | | Multipack | 6 |
| 8168008 | Angle adapter, C07 (1"3/4 Rotolock, 7/8" ODF) | Models with 1"3/4 rotolock connection | Multipack | 6 |
| 7703011 | Angle adapter set, C06 (1"~1/2"), C01 (1"~3/8") | | Multipack | 4 |
| 7703012 | Angle adapter set, C09 (1"1/4~5/8"), C06 (1"~1/2") | Models with 1"1/4 rotolock connection | Multipack | 4 |
| 7703014 | Angle adapter set, C02 (1"3/4~1"1/8), C04 (1"1/4~3/4") | | Multipack | 6 |
| 7703013 | Angle adapter set, C07 (1"3/4~7/8"), C04 (1"1/4~3/4") | Models with 1"3/4 rotolock connection | Multipack | 6 |

Rotolock service valves and valve sets (without gasket)


| Code n° | Description | Application | Packaging | Pack size |
|----------|---|---|---------------|-------------|
| 7968003 | Rotolock valve, V01, (1" Rotolock, 3/8" ODF) | Models with 1" rotolock connection | Industry pack | 50 |
| 8168027 | Rotolock valve, V01, (1" Rotolock, 3/8" ODF) | | Multipack | 6 |
| 7968004 | Rotolock valve, V06, (1" Rotolock, 1/2" ODF) | | Industry pack | 50 |
| 8168031 | Rotolock valve, V06, (1" Rotolock, 1/2" ODF) | | Multipack | 6 |
| 7968006 | Rotolock valve, V04, (1"1/4 Rotolock, 3/4" ODF) | Models with 1"1/4 rotolock connection | Industry pack | 42 |
| 8168029 | Rotolock valve, V04, (1"1/4 Rotolock, 3/4" ODF) | | Multipack | 6 |
| 7968007 | Rotolock valve, V05, (1"1/4 Rotolock, 7/8" ODF) | | Industry pack | 36 |
| 8168030 | Rotolock valve, V05, (1"1/4 Rotolock, 7/8" ODF) | | Multipack | 6 |
| 7968005 | Rotolock valve, V09, (1"1/4 Rotolock, 5/8" ODF) | | Industry pack | 50 |
| 8168033 | Rotolock valve, V09, (1"1/4 Rotolock, 5/8" ODF) | | Multipack | 6 |
| 7968009 | Rotolock valve, V02, (1"3/4 Rotolock, 1"1/8 ODF) | Models with 1"3/4 rotolock connection | Industry pack | 24 |
| 8168028 | Rotolock valve, V02, (1"3/4 Rotolock, 1"1/8 ODF) | | Multipack | 6 |
| 7968008 | Rotolock valve, V07, (1"3/4 Rotolock, 7/8" ODF) | | Industry pack | 36 |
| 8168032 | Rotolock valve, V07, (1"3/4 Rotolock, 7/8" ODF) | | Multipack | 6 |
| 8168022 | Rotolock valve, V10, (1"3/4 Rotolock, 1"3/8 ODF) | Models with 2"1/4 rotolock connection | Single pack | 1 |
| 7968011 | Rotolock valve, V03, (2"1/4 Rotolock, 1"5/8 ODF) | | Industry pack | 18 |
| 8168026 | Rotolock valve, V03, (2"1/4 Rotolock, 1"5/8 ODF) | | Multipack | 6 |
| 7968010 | Rotolock valve, V08, (2"1/4 Rotolock, 1"3/8 ODF) | | Industry pack | 18 |
| 8168025 | Rotolock valve, V08, (2"1/4 Rotolock, 1"3/8 ODF) | | Multipack | 6 |
| 120Z0320 | Flange type valve, V12 (Flange ~ 2"1/8) | | SY/SZ380 | Single pack |
| 7703009 | Valve set, V02 (1"3/4~1"1/8), V04 (1"1/4~3/4") | SM/SZ084-100 110* to 161*, SH090-161, SH184 MT(Z)80-160 & NTZ136-271 | Multipack | 6 |
| 7703008 | Valve set, V02(1"3/4~1"1/8), V05(1"1/4~7/8") | SH090 & WSH090 PSH019 | Multipack | 6 |
| 120Z0403 | Valve set, V02(1"3/4~1"1/8), V05(1"1/4~7/8") | HCJ090.105.120 MLZ/MLM058.066.076 | Multipack | 8 |
| 7703392 | Valve set, V10 (1"3/4~1"3/8), V05 (1"1/4~7/8") | SM110.112.120.124.147.148.161 & SZ110.120.148.161 & SH105.120.140.161.184 & WSH105.120.140.161.184 PSH023.026.030.034.039 | Multipack | 6 |
| 7703383 | Valve set, V03 (2"1/4~1"5/8), V02 (1"3/4~1"1/8) | SM/SY/SZ175.185.240.300.380SH180.240.300.380 PSH038.051.064.077 | Multipack | 4 |
| 7703010* | Valve set, V08 (2"1/4~1"3/8), V07 (1"3/4~7/8") | SM/SZ175.185 | Multipack | 6 |
| 120Z0316 | Valve set, V12 (flange ~ 2"1/8), V10(1"3/4~1"3/8) | SY/Z380 | Single pack | 1 |
| 120Z0547 | Valve set, V03 (2"1/4~1"5/8), V10 (1"3/4~1"3/8) | SH485 | Multipack | 4 |
| 7703004 | Valve set, V06 (1"~1/2"), V01 (1"~3/8") | MT(Z)18-28 (except 22-1 & 28-1) | Multipack | 4 |
| 7703006 | Valve set, V07 (1"3/4~7/8"), V04 (1"1/4~3/4") | MT(Z)44-72 & NTZ096-108 | Multipack | 6 |
| 7703005 | Valve set, V09 (1"1/4~5/8"), V06 (1"~1/2") | MT(Z)32-40 & 22-1 & 28-1 & NTZ048-068 | Multipack | 4 |

* diameter restriction

Crankcase heater



| Code n° | Description | Application | Packaging | Pack size |
|----------|---|---|---------------|-----------|
| 120Z0055 | Belt type crankcase heater, 40W, 230V, CE mark, UL | HRM025-047, HRP025-047, HRH029-050 | Multipack | 6 |
| 120Z0056 | Belt type crankcase heater, 40W, 400V, CE mark, UL | HHP015-019-021-026 | Multipack | 6 |
| 120Z5038 | Belt type crankcase heater, 40W, 460V, CE mark, UL | | Multipack | 6 |
| 120Z5039 | Belt type crankcase heater, 40W, 575V, CE mark, UL | HRM025-047, HRP025-047, HRH029-050 | Multipack | 6 |
| 120Z0057 | Belt type crankcase heater, 50W, 230V, CE mark, UL | HRM048-060, HLM068-081, HRP048-060, HLP068-081, | Multipack | 6 |
| 120Z0058 | Belt type crankcase heater, 50W, 400V, CE mark, UL | HRH041-056, HLH061-068, HLJ072-083 HHP030-038-045 | Multipack | 6 |
| 120Z5040 | Belt type crankcase heater, 70W, 240V, CE mark, UL | MLZ/MLM 015-019-021-026 | Multipack | 6 |
| 120Z5041 | Belt type crankcase heater, 55/70W, 400/460V, CE mark, UL | LLZ all models | Multipack | 6 |
| 120Z0059 | Belt type Crankcase heaters, 65W, 230V, CE mark, UL | HCM094-120, HCP094-120, HCJ090-120, | Multipack | 6 |
| 120Z0060 | Belt type Crankcase heaters, 65W, 400V, CE mark, UL | MLZ/MLM 030.038.045.058.066.076 | Multipack | 6 |
| 120Z5012 | Belt type crankcase heater, 70W, 460V, CE mark, UL | LLZ all models | Multipack | 6 |
| 120Z5013 | Belt type crankcase heater, 70W, 575V, CE mark, UL | HCM094-120, HCP094-120, HCJ090-120 | Multipack | 4 |
| 120Z5042 | Belt type crankcase heater, 70W, 575V, CE mark, UL | MLZ/MLM030.038.045.058.066.076 | Multipack | 4 |
| 7773109 | Belt type crankcase heater, 65W, 110V, CE mark, UL | MLZ/MLM 015-019-021-026 | Multipack | 4 |
| 7973001 | Belt type crankcase heater, 65W, 110V, CE mark, UL | LLZ all models | Multipack | 4 |
| 7773107 | Belt type crankcase heater, 65W, 230V, CE mark, UL | HCM094-120, HCP094-120, HCJ090-120, | Multipack | 4 |
| 7973002 | Belt type crankcase heater, 65W, 230V, CE mark, UL | MLZ/MLM 030.038.045.058.066.076 | Multipack | 4 |
| 7773117 | Belt type crankcase heater, 65W, 400V, CE mark, UL | LLZ all models | Multipack | 4 |
| 120Z0466 | Belt type crankcase heater, 65W, 460V, CE mark, UL | SM/SZ084-161 | Industry pack | 50 |
| 120Z0467 | Belt type crankcase heater, 65W, 575V, CE mark, UL | VSH088.117 & VZH088.117 | Multipack | 6 |
| 120Z0039 | Belt type crankcase heater, 65W, 400V, CE mark, UL | MT(Z)044-081 | Industry pack | 50 |
| 120Z0038 | Belt type crankcase heater, 65W, 230V, CE mark, UL | NTZ096-136 | Multipack | 6 |
| 7773106 | Belt type crankcase heater, 54W, 230V, CE mark, UL | VTZ086-121 | Multipack | 6 |
| 7773013 | Belt type crankcase heater, 54W, 400V, UL | | Multipack | 6 |
| 7773110 | Belt type crankcase heater, 75W, 110V, CE mark, UL | SM/SZ084-161 | Multipack | 8 |
| 7773108 | Belt type crankcase heater, 75W, 230V, CE mark, UL | VSH088.117 & VZH088.117 | Multipack | 8 |
| 7973005 | Belt type crankcase heater, 75W, 230V, CE mark, UL | VSH088.117 & VZH088.117 | Multipack | 8 |
| 7773118 | Belt type crankcase heater, 75W, 400V, CE mark, UL | MT(Z)018-040, NTZ048-068, MPZ038-068 VTZ038-054 | Multipack | 4 |
| 120Z0464 | Belt type crankcase heater, 75W, 460V, CE mark, UL | MT(Z)018-040, NTZ048-068, MPZ038-068 VTZ038-054 | Multipack | 4 |
| 120Z0465 | Belt type crankcase heater, 75W, 575V, CE mark, UL | SM/SZ175-185 & SH180-240 to 485 | Multipack | 6 |
| 7773121 | Belt type crankcase heater, 130W, 110V, CE mark, UL | VSH170 & VZH170 | Multipack | 6 |
| 7773122 | Belt type crankcase heater, 130W, 230V, CE mark, UL | MT(Z)100-160, | Industry pack | 50 |
| 7973007 | Belt type crankcase heater, 130W, 230V, CE mark, UL | NTZ215-271, | Multipack | 6 |
| 7773123 | Belt type crankcase heater, 130W, 400V, CE mark, UL | VTZ171-215-242 | Multipack | 6 |
| | | SM/SZ175-185 & SH180-240 to 485 | Multipack | 6 |
| | | MT(Z)100-160, | Multipack | 6 |
| | | NTZ215-271 | Multipack | 6 |
| | | VTZ171-215-242 | Multipack | 6 |
| | | SY/SZ240-380 | Multipack | 4 |
| | | | Industry pack | 50 |
| | | | Multipack | 4 |

Surface sump heater



| Code n° | Description | Application | Packaging | Pack size |
|----------|--|---|-----------|-----------|
| 120Z0361 | Surface sump heater + Bottom insulation, 48W, 24V, CE, UL | | Multipack | 6 |
| 120Z0380 | Surface sump heater + Bottom insulation, 48W, 230V, CE, UL | | Multipack | 6 |
| 120Z0381 | Surface sump heater + Bottom insulation, 48W, 400V, CE, UL | SM/SZ084-161 excluding SM112.124.147 | Multipack | 6 |
| 120Z0382 | Surface sump heater + Bottom insulation, 48W, 460V, CE, UL | | Multipack | 6 |
| 120Z0383 | Surface sump heater + Bottom insulation, 48W, 575V, CE, UL | | Multipack | 6 |
| 120Z0388 | Surface sump heater, 80W, 24V, CE, UL | | Multipack | 8 |
| 120Z0389 | Surface sump heater, 80W, 230V, CE, UL | SM112.124.147 & SH090-184 & WSH090-184 | Multipack | 8 |
| 120Z0390 | Surface sump heater, 80W, 400V, CE, UL | PSH019.023.026.030.034.039 | Multipack | 8 |
| 120Z0391 | Surface sump heater, 80W, 460V, CE, UL | VSH088.117 & VZH088.117 | Multipack | 8 |
| 120Z0402 | Surface sump heater, 80W, 575V, CE, UL | | Multipack | 8 |
| 120Z0360 | Surface sump heater + Bottom insulation, 56W, 24V, CE, UL | SM/SZ175.185, SY185, SH180 - 240 to 485 | Multipack | 6 |
| 120Z0376 | Surface sump heater + Bottom insulation, 56W, 230V, CE, UL | PSH038.051.064.077 | Multipack | 6 |
| 120Z0377 | Surface sump heater + Bottom insulation, 56W, 400V, CE, UL | VSH170 & VZH170 | Multipack | 6 |
| 120Z0378 | Surface sump heater + Bottom insulation, 56W, 460V, CE, UL | | Multipack | 6 |
| 120Z0379 | Surface sump heater + Bottom insulation, 56W, 575V, CE, UL | SM/SZ175.185, SY185, SH180 - 240 to 485 | Multipack | 6 |
| 120Z0372 | Surface sump heater + Bottom insulation, 80W, 230V, CE, UL | VSH170 & VZH170 | Multipack | 6 |
| 120Z0373 | Surface sump heater + Bottom insulation, 80W, 400V, CE, UL | | Multipack | 4 |
| 120Z0375 | Surface sump heater + Bottom insulation, 80W, 575V, CE, UL | SY/SZ240 to 380 | Multipack | 4 |
| | | | Multipack | 4 |

PTC heater


| Code n° | Description | Application | Packaging | Pack size |
|----------|----------------|---------------------------|---------------|-----------|
| 120Z0459 | PTC heater 27W | All MTZ/MT/NTZ/VTZ models | Multipack | 10 |
| 120Z0460 | PTC heater 27W | All MTZ/MT/NTZ/VTZ models | Industry pack | 50 |

Discharge thermostat kit


| Code n° | Description | Application | Packaging | Pack size |
|---------|--------------------------|-------------|---------------|-----------|
| 7750009 | Discharge thermostat kit | All models | Multipack | 10 |
| 7973008 | Discharge thermostat kit | All models | Industry pack | 50 |

Lubricants / oils


| Code n° | Description | Application | Packaging | Pack size |
|----------|--|---|-------------|-----------|
| 7754001 | Mineral oil, 160P, 2 litre can | SM with R22 MT with R22 | Multipack | 8 |
| 7754002 | Mineral oil, 160P, 5 litre can | SM with R22 MT with R22 | Multipack | 4 |
| 7754019 | POE lubricant, 160PZ, 1 litre can | MTZ & NTZ & MPZ & VTZ with R404A, R507A, R134a, R407C | Multipack | 12 |
| 120Z0573 | POE lubricant, 160PZ, 2.5 litre can | MTZ & NTZ & MPZ & VTZ with R404A, R507A, R134a, R407C | Multipack | 4 |
| 7754023 | POE lubricant, 160SZ, 1 litre can | SZ with R407C, R134a, R404A & SH with R410A VSH and VZH all models | Multipack | 12 |
| 120Z0571 | POE lubricant, 160SZ, 2.5 litre can | SZ with R407C, R134a, R404A & SH with R410A VSH and VZH all models | Multipack | 4 |
| 7754121 | POE lubricant, 320SZ, 1 litre can | SY with R22, R407C, R134a | Multipack | 12 |
| 120Z0572 | POE lubricant, 320SZ, 2.5 litre can | SY with R22, R407C, R134a | Multipack | 4 |
| 120Z5034 | PVE lubricant, 320HV (FVC68D), 1 litre can | HRP, HLP, HCP, HRH, HLL, HLJ, HCJ HHP MLZ / MLM / LLZ | Single pack | 1 |

Miscellaneous


| Code n° | Description | Application | Packaging | Pack size |
|---------|--|--|---------------|-----------|
| 7750007 | MS-SM tandem replacement kit | Replace MS/MSZ by SM/SZ | Single pack | 1 |
| 8154001 | Danfoss CC blue spray paint | SM, SY, SZ, SH VSH and VZH all models All models | Single pack | 1 |
| 8156019 | Oil sight glass with gaskets (black & white) | SM, SY, SZ, SH VSH and VZH all models 1-2-4 cylinder VE versions | Multipack | 4 |
| 8156129 | Gasket for oil sight glass (white teflon) | SM, SY, SZ, SH VSH and VZH all models 1-2-4 cylinder VE versions | Multipack | 10 |
| 7956005 | Gasket for oil sight glass (white teflon) | SM, SY, SZ, SH VSH and VZH all models 1-2-4 cyl models produced until 2002 | Industry pack | 50 |
| 8156145 | Gasket for oil sight glass (black chloroprene) | Custom products 1-2-4 cyl models produced since 2002 | Multipack | 10 |



SH / SM / SY / SZ & WSH ranges



PSH range

Solder sleeve adapter sets



| Code n° | Description | Application | Packaging | Pack size |
|----------|---|---|-------------|-----------|
| 7765005 | Solder sleeve adapter set (1"3/4 Rotolock, 1"1/8 ODF), (1"1/4 Rotolock, 3/4" ODF) | SM084.090.100 & SZ084.090.100 | Multipack | 6 |
| 120Z0125 | Solder sleeve adapter set (1"3/4 Rotolock, 1"1/8 ODF), (1"1/4 Rotolock, 7/8" ODF) | SH090 & WSH090 & PSH019 | Multipack | 8 |
| 7765006* | Solder sleeve adapter set (1"3/4 Rotolock, 1"3/8 ODF), (1"1/4 Rotolock, 7/8" ODF) | SM110.112.120.124.147.148.161 & SZ110.120.148.161 & SH105.120.140.161.184 & WSH105.120.140.161.184 & PSH023.026.030.034.039 | Multipack | 6 |
| 120Z0405 | Solder sleeve adapter set (1"3/4 Rotolock, 1"3/8 ODF), (1"1/4 Rotolock, 7/8" ODF) | SM/SY/SZ160.175.185.240.300 & SH180.240.300.295.380 & PSH038.051.064.77 | Multipack | 8 |
| 7765028 | Solder sleeve adapter set, (2"1/4 Rotolock, 1"5/8 ODF), (1"3/4 Rotolock, 1"1/8 ODF) | SM/SY/SZ160.175.185.240.300 & SH180.240.300.295.380 & PSH038.051.064.77 | Multipack | 6 |
| 120Z0317 | Flange, (Flange, 2"1/8 ODF) (1"3/4 Rotolock, 1"3/8 ODF) | SY/Z380 | Single pack | 1 |
| 120Z0504 | Solder sleeve adapter set, (2"1/8 Rotolock, 1"5/8 ODF), (1"3/4 Rotolock, 1"3/8 ODF) | SH485 | Single pack | 1 |

*: Diameter restriction

3 phase soft start equipment



| Code n° | Description | Application | Packaging | Pack size |
|----------|--|--|-------------|-----------|
| 7705006 | Electronic soft start kit, MCI 15 C | SM/SZ084-110 & SH090 & WSH090 & PSH019 | Single pack | 1 |
| 7705007 | Electronic soft start kit, MCI 25 C | SM/SZ115-185 & SH105-184 & WSH105-184 & PSH023.026.030.034.039 | Single pack | 1 |
| 037N0401 | Electronic soft start kit, MCI 50 CM | SY/SZ240-380 & SH180 - 240 to 380 & PSH038.051.064.077 | Single pack | 1 |
| 174G5205 | Electronic soft starter MCD 201-055-T6-CVI | SH485 | Single pack | 1 |

Motor protection modules and transformers



| Code n° | Description | Application | Packaging | Pack size |
|----------|---|--------------------------|-------------|-----------|
| 120Z0141 | Electronic motor protection module, 24 V DC | SM/SZ115-185 & SH180 | Single pack | 1 |
| 8169020 | Electronic motor protection module, 24 V AC | | Single pack | 1 |
| 8169021 | Electronic motor protection module, 230 V | SY/SZ240-380 & SH240-485 | Single pack | 1 |
| 120Z0140 | Electronic motor protection module, 24 V DC | | Single pack | 1 |
| 8169015 | Electronic motor protection module, 24 V AC | | Single pack | 1 |
| 8169016 | Electronic motor protection module, 115/230 V | | Single pack | 1 |

Acoustic hoods


| Code n° | Description | Application | Packaging | Pack size |
|----------|---|--|-------------|-----------|
| 7755011 | Acoustic hood for scroll compressor | SM/SZ084.090.100 | Single pack | 1 |
| 7755010 | Acoustic hood for scroll compressor | SM/SZ110.120 | Single pack | 1 |
| 120Z0035 | Acoustic hood for scroll compressor | SM112.124.147* & SH105.120.140*.161* & WSH105.120.140*.161* | Single pack | 1 |
| 120Z0135 | Acoustic hood for scroll compressor | SM147-3 & SH140-3.SH161-3 & SH184 & WSH140-3.WSH161-3 & WSH184 | Single pack | 1 |
| 7755017 | Acoustic hood for scroll compressor | SM/SZ148*.161* | Single pack | 1 |
| 7755007 | Acoustic hood for scroll compressor | SM/SZ175.185 | Single pack | 1 |
| 7755016 | Acoustic hood for scroll compressor | SY/SZ240.300 | Single pack | 1 |
| 7755022 | Acoustic hood for scroll compressor | SY/SZ380 | Single pack | 1 |
| 120Z0034 | Acoustic hood for scroll compressor | SH090 & WSH090 | Single pack | 1 |
| 120Z0022 | Acoustic hood for scroll compressor | SH180.240.295.300.380*.485* | Single pack | 1 |
| 120Z0579 | Acoustic hood for scroll compressor | SH380-3 & PSH038.051.064.077 | Single pack | 1 |
| 120Z0353 | Bottom insulation for scroll compressor | SH180.240.295.300.380.485 | Single pack | 1 |

* except code 3

Mounting kits


| Code n° | Description | Application | Packaging | Pack size |
|----------|--|--|-------------|-----------|
| 8156138 | Mounting kit for 1 scroll compressor. Grommets, sleeves, bolts, washers | SM/SZ084-185 (excluding SM112.124.147) & SH180 240 to 485, PSH038.051.064.077 in single installation | Single pack | 1 |
| 120Z0066 | Mounting kit for 1 scroll compressor. Grommets, sleeves, bolts, washers | SM112-124-147 & SH090-184 & PSH019.023.026.030.034.039 | Single pack | 1 |
| 8156147 | Mounting kit for 1 scroll compressor. Grommets, sleeves, bolts, washers, rotolock nuts, solder sleeves, gaskets | SM/SZ148-185 | Single pack | 1 |
| 8156144 | Mounting kit for 1 scroll compressor. Grommets, sleeves | SY/SZ240-380 | Single pack | 1 |
| 8156007 | Mounting kit for 4 cylinder compressor & MS, including 4 grommets, 4 bolts Ebox: 96 x 115 mm; Sleeves 1"1/8 - 3/4" | MS/MSE/MSZ115.125.175.185 | Single pack | 1 |
| 8156003 | Mounting kit for 1 scroll tandem, including 4 rubber grommets | SM/SZ350 - 370 Tandem & MS Tandem | Single pack | 1 |
| 120Z0495 | Mounting kit for 1 scroll compressor including 4 triangle rigid spacers, 4 sleeves, 4 bolts, 4 washers | SH180 - 240 to 485 in parallel installation PSH038.051.064.077 | Single pack | 1 |
| 7777045 | Mounting kit for 1 scroll compressor including 4 hexagonal rigid spacers, 4 sleeves, 4 bolts, 4 washers | SH180 - 240 to 485 in parallel installation PSH038.051.064.077 | Single pack | 1 |

Terminal boxes and accessories


| Code n° | Description | Application | Packaging | Pack size |
|----------|---|---|-------------|-----------|
| 8173230 | T-block connector 52 x 57 mm, 3 screws H10-32 UNF9.5 | SM084.090.100.110.112*.120.124*.147*.148*.161* SZ084.090.100.110.120.148*.161* SH090.105.120.140*.161* | Multipack | 10 |
| 8173021 | T block connector 60 x 75 mm | SM147-3.148-3.161-3.175.185 & SY240*.300*.380 SZ175.185.240*.300*.380 SH140-3.161-3.180.184.240*.300*.380* & WSH140-3.161-3.184 & PSH038.051.064.077 | Multipack | 10 |
| 8173331 | T block connector 80 x 80 mm | SY/Z240-3.300-3 & SH240-3.295-3.300-3.380-3.485 | Multipack | 10 |
| 120Z0532 | T block connector | PSH019.023.026.030.034 | Single pack | 1 |
| 120Z0533 | T block connector | PSH039 | Single pack | 1 |
| 8156135 | Service kit for terminal box 96 x 115 mm, including 1 cover, 1 clamp | SM084.090.100.110.112.120.124.147.148*.161* SZ084.090.100.110.120.148*.161* SH090.105.120.140*.161* & WSH090.105.120.140*.161* | Multipack | 10 |
| 8156139 | Terminal box 186 x 198 mm, incl cover | SM/SZ148-3.161-3.175.185 | Single pack | 1 |
| 120Z0458 | Terminal box 210 x 190 incl. cover | SH180.240.295.300.380*.485* SY/SZ240.300.380 | Single pack | 1 |
| 120Z0462 | Terminal box 210 x 190 incl. cover and module wiring For 258 x 208 terminal box replacement | SH180.240.295.300.380*.485* SY/SZ240.300.380 | Single pack | 1 |
| 120Z0567 | Terminal box with 230V OCS | PSH038 | Single pack | 1 |
| 120Z0568 | Terminal box with 24V OCS | PSH038 | Single pack | 1 |
| 120Z0483 | Terminal box with 230V OCS | PSH051 | Single pack | 1 |
| 120Z0484 | Terminal box with 24V OCS | PSH051 | Single pack | 1 |
| 120Z0563 | Terminal box with 230V OCS | PSH064 | Single pack | 1 |
| 120Z0564 | Terminal box with 24V OCS | PSH064 | Single pack | 1 |
| 120Z0565 | Terminal box with 230V OCS | PSH077 | Single pack | 1 |
| 120Z0566 | Terminal box with 24V OCS | PSH077 | Single pack | 1 |
| 120Z0486 | OCS connectors | PSH038.051.064.077 | Single pack | 1 |
| 120Z0529 | Terminal box | PSH019.023.026.030.034.039 | Single pack | 1 |
| 120Z0530 | Control board | PSH019.023.026.030.034.039 | Single pack | 1 |
| 120Z0413 | Terminal box cover | SM147-3 & SH140-3.SH161-3 & SH184 & & WSH140-3. WSH161-3 & WSH184 | Single pack | 1 |
| 120Z0150 | Terminal box cover | SH380-3 | Single pack | 1 |
| 120Z0531 | Terminal box cover | PSH019.023.026.030.034.039 | Single pack | 1 |
| 120Z0485 | Terminal box cover for OCS version | PSH038.051.064.077 | Single pack | 1 |

* except code 3

Suction header restrictors for tandem


| Code n° | Description | Application | Packaging | Pack size |
|----------|---------------------------|----------------------------------|---------------|-----------|
| 7765012 | Suction header restrictor | SM/SZ170.180.200 | Single pack | 1 |
| 120Z0322 | Suction header restrictor | SM/SZ170.180.200 | Industry pack | 50 |
| 7765025 | Suction header restrictor | SM/SZ220.242.268.271.281.296.322 | Single pack | 1 |
| 120Z0324 | Suction header restrictor | SM/SZ220.242.268.271.281.296.322 | Industry pack | 50 |
| 7765013 | Suction header restrictor | SM/SZ350.370 | Single pack | 1 |
| 120Z0323 | Suction header restrictor | SM/SZ350.370 | Industry pack | 50 |
| 7765027 | Suction header restrictor | SZ425.485 | Single pack | 1 |

Suction washers for tandem


| Code n° | Description | Application | Packaging | Pack size |
|---------|----------------|-------------|-------------|-----------|
| 7777023 | Suction washer | SY/SZ540 | Single pack | 1 |
| 7777036 | Suction washer | SY/SZ680 | Single pack | 1 |

Tandem kits including suction header restrictor and suction and discharge tees


| Code n° | Description | Application | Packaging | Pack size |
|---------|-------------------------------------|--------------------------|-------------|-----------|
| 7703251 | Restrictor + suction/discharge Tees | SM/SZ170.180.200 | Single pack | 1 |
| 7703384 | Restrictor + suction/discharge Tees | SM/SZ220.242 | Single pack | 1 |
| 7703390 | Restrictor + suction/discharge Tees | SM/SZ268.271.281.296.322 | Single pack | 1 |
| 7703371 | Restrictor + suction/discharge Tees | SM/SZ350.370 | Single pack | 1 |

Tandem kits including suction washer, rigid spacers and oil connection sleeves


| Code n° | Description | Application | Packaging | Pack size |
|----------|--|--|-------------|-----------|
| 7777044 | Suction washer, rigid spacer, sleeve for oil connect | SH182.212.242.282.322 & SM248 & even tandem PSH019.023.026.030.034.039 | Single pack | 1 |
| 7777050 | Suction washer, rigid spacer, sleeve for oil connect | SM272 | Single pack | 1 |
| 7777054 | Suction washer, rigid spacer, sleeve for oil connect | SM294 | Single pack | 1 |
| 7777043 | Suction washer, rigid spacer, sleeve for oil connect | SH195.210.230 | Single pack | 1 |
| 7777042 | Suction washer, rigid spacer, sleeve for oil connect | SH260.281.301 | Single pack | 1 |
| 7777052 | Suction washer, rigid spacer, sleeve for oil connect | SH304.324.345 | Single pack | 1 |
| 7777041 | Suction washer, grommets, sleeve for oil connect | SH360.482.590.600.760 & even tandem PSH038.051.064.077 | Single pack | 1 |
| 7777053 | Suction washer, rigid spacer, sleeve for oil connect | SH368 | Single pack | 1 |
| 7777037 | Suction washer, grommets, sleeve for oil connect | SH420.535.540.675.680 & PSH038+051, PSH051+064, PSH064+077 | Single pack | 1 |
| 7777038 | Suction washer, grommets, sleeve for oil connect | SH475.480.560 & PSH038+064 | Single pack | 1 |
| 7777048 | Suction washer, grommets, sleeve for oil connect | SH620 & PSH051+077 | Single pack | 1 |
| 120Z0550 | Suction washer, grommets, sleeve for oil connect | SH875 | Single pack | 1 |
| 120Z0551 | Suction washer, grommets, sleeve for oil connect | SH780 | Single pack | 1 |
| 120Z0569 | Suction washer, grommets, sleeve for oil connect | SH725 | Single pack | 1 |
| 120Z0578 | Suction washer, grommets, sleeve for oil connect | SH970 | Single pack | 1 |

Trio kits


| Code n° | Description | Application | Packaging | Pack size |
|---------|---|---|-------------|-----------|
| 7777012 | Restrictors, Tees, sleeves, gaskets & oil fittings for trio mounting (copper pipes not included) | 3 x SM/SZ185 | Single pack | 1 |
| 7777016 | Restrictors, sleeves, gaskets & oil fittings for trio mounting (copper pipes & Tees not included) | 3 x SM/SZ185 | Single pack | 1 |
| 7777051 | Suction washer, rigid spacer, sleeve for oil connect | SH483 | Single pack | 1 |
| 7777039 | Suction washer, grommets, sleeve for oil connect | SH550.720.885.900 (right suction) & PSH038.051.064.077 trios (right suction) | Single pack | 1 |
| 7777040 | Suction washer, grommets, sleeve for oil connect | SH550.720.885.900.1140 (left suction) & SH1455 (left and right suction) & PSH038.051.064.077 trios (left suction) | Single pack | 1 |
| 7777049 | Suction washer, grommets, sleeve for oil connect | SH1140 (right suction) | Single pack | 1 |

Quadro kits


| Code n° | Description | Application | Packaging | Pack size |
|---------|---|--------------|-------------|-----------|
| 7777011 | Restrictors, Tees, sleeves, gaskets & oil fittings for quadro mounting (copper pipes not included) | 4 x SM/SZ185 | Single pack | 1 |
| 7777017 | Restrictors, sleeves, gaskets & oil fittings for quadro mounting (copper pipes & Tees not included) | 4 x SM/SZ185 | Single pack | 1 |

Oil equalisation adapters


| Code n° | Description | Application | Packaging | Pack size |
|----------|--|--|-------------|-----------|
| 120Z0164 | Oil equalisation adapter. To connect 7/8" tube on 22 mm oil sight glass connection. Includes 1 adapter 22 mm to 7/8", 2 gaskets. | SM, SY, SZ, SH | Single pack | 1 |
| 120Z0165 | Oil equalisation adapter. To connect 1/2" tube on 22 mm oil sight glass connection. Includes 1 adapter 22 mm to 1/2", 2 gaskets. | SM, SY, SZ, SH | Single pack | 1 |
| 7773112 | Oil equalisation adapter kit for trio mounting. Includes oil fittings, gaskets & adapters (copper pipes not included) | 3 x SM/SZ160 or 3 x SM/SZ185 4 x SM/SZ160 or 4 x SM/SZ185 | Single pack | 1 |
| 120Z0430 | Oil fittings & adapters for quadro mounting (copper pipes not included) | 4 x SM/SZ185 | Single pack | 1 |

Sensors & cables


| Code n° | Description | Application | Packaging | Pack size |
|----------|---|----------------------------|-------------|-----------|
| 120Z0534 | Discharge temperature sensor PT100 | PSH019.023.026.030.034.039 | Single pack | 1 |
| 120Z0535 | Liquid injection valve body | PSH019.023.026.030.034.039 | Single pack | 1 |
| 120Z0536 | Liquid injections valve coil with cable | PSH019.023.026.030.034.039 | Single pack | 1 |
| 060G5707 | HP sensor including plug | PSH models | Single pack | 1 |
| 060G0090 | LP sensor including plug | PSH models | Single pack | 1 |
| 060G0008 | | | | |
| 120Z0482 | DGT sensor with cable | PSH038.051.064.077 | Single pack | 1 |
| 061L4223 | Liquid injections valve coil with cable | PSH038.051.064.077 | Single pack | 1 |
| 120Z0487 | Liquid injection valve body | PSH038.051.064.077 | Single pack | 1 |
| 120Z0478 | Can Bus cable with cable glands | PSH038.051.064.077 tandem | Single pack | 1 |
| 120Z0479 | Can Bus cable with cable glands | PSH038.051.064.077 trio | Single pack | 1 |

Communication tool


| Code n° | Description | Application | Packaging | Pack size |
|----------|-------------|-------------|-------------|-----------|
| 080G0073 | MMIMYK | PSH models | Single pack | 1 |
| 080G0294 | MMIGRS | PSH models | Single pack | 1 |
| 080G0075 | RJ11 cable | PSH models | Single pack | 1 |


H & HHP ranges
Solder sleeve adapter sets


| Code n° | Description | Application | Packaging | Pack size |
|----------|---|---|-----------|-----------|
| 120Z0126 | Solder sleeve adapter set (1"1/4 Rotolock, 3/4" ODF), (1" Rotolock, 1/2" ODF) | HRM032-042, HRP034-042, HRH029-038, HHP015.019.021.026 | Multipack | 6 |
| 120Z0127 | Solder sleeve adapter set (1"1/4 Rotolock, 7/8" ODF), (1" Rotolock, 1/2" ODF) | HRM045-060, HRP045-060, HLM068-075, HLP068-075, HRH040-056, HLH061-068, HLJ072-083 HHP030.038.045 | Multipack | 6 |
| 120Z0128 | Solder sleeve adapter set (1"1/4 Rotolock, 7/8" ODF), (1"1/4 Rotolock, 3/4" ODF) | HLM078-81, HLP078-081 | Multipack | 6 |
| 120Z0129 | Solder sleeve adapter set (1"3/4 Rotolock, 1"1/8 ODF), (1"1/4 Rotolock, 7/8" ODF) | HCM094-120, HCP094-120, HCJ090-120 | Multipack | 6 |

Run capacitors


| Code n° | Description | Application | Packaging | Pack size |
|----------|---------------------------|---|-----------|-----------|
| 8173231 | Run capacitor 440V, 40 µF | HHP015 | Multipack | 10 |
| 8173233 | Run capacitor 440V, 50 µF | HHP030 | Multipack | 10 |
| 8173234 | Run capacitor 440V, 55 µF | HRM054-060, HLM068-081, HRP054-060, HLP068-081, HRH051-056, HLH068, HLJ072-083 all code 5, HHP038 | Multipack | 10 |
| 120Z0050 | Run capacitor 440V, 60 µF | HRM045-047, HRP045-047, HRH038-040 all code 5 HHP019-021 | Multipack | 10 |
| 120Z0051 | Run capacitor 440V, 70 µF | HRM032-042, HRP034-042, HRH029-036 all code 5 HHP026 | Multipack | 10 |

Start capacitors for CSR wiring


| Code n° | Description | Application | Packaging | Pack size |
|----------|---|---|-----------|-----------|
| 120Z0399 | Start capacitor 250V, 145-175 µF | HRM032-047, HRP034-047, HRH029-040 all code 5, HHP015.019.021.026 | Multipack | 10 |
| 120Z0040 | Start capacitor 250V, 161-193 µF | HRM051-054, HRP051-054 all code 5, HHP030 | Multipack | 10 |
| 8173001 | Start capacitor 330V, 88-108 µF (98 µF) | HRM058-060, HRP058-060, HLM068-081, HLP068-081, HRH051-056, HLH068, HLJ072-083 all code 5, HHP038 | Multipack | 10 |

Starting relays for CSR wiring


| Code n° | Description | Application | Packaging | Pack size |
|----------|-----------------------------|--|-----------|-----------|
| 120Z0393 | Starting relay type RVA9CKL | HRM032-047, HRP034-047, HRH031-040 all code 5 HHP015.019.021.026 | Multipack | 10 |
| 120Z0394 | Starting relay type RVA3EKL | HRM051-054, HRP051-054 all code 5, HHP030 | Multipack | 10 |
| 120Z0395 | Starting relay type RVA4GKL | HRM058-060, HRP058-060, HLM068-081, HLP068-081, HRH051-056, HLH068, HLJ072-083 all code 5, HHP038 | Multipack | 10 |

Mounting kits


| Code n° | Description | Application | Packaging | Pack size |
|----------|--|--|-------------|-----------|
| 120Z5017 | Mounting grommet | HRM, HLM, HCM, HRP, HLP, HCP, HRH, HLH, HLJ | Single pack | 1 |
| 120Z5005 | Mounting kit for 1 scroll compressor including 4 grommets, 4 sleeves, 4 bolts, 4 washers | HRM, HLM, HCM, HRP, HLP, HCP, HRH, HLH, HLJ, HHP | Single pack | 1 |

Acoustic hoods


| Code n° | Description | Application | Packaging | Pack size |
|----------|---------------|---|-------------|-----------|
| 120Z5043 | Acoustic hood | HRM032-047, HRP 032-047, HRH 031-040, HRH047, HRH048, HRH050 & HHP015-019-021-026 | Single pack | 1 |
| 120Z5044 | Acoustic hood | HRM048-081, HRP048-081, HRH044, HRH049, HRH051-056, HLH061-068, HLJ072-083, HHP030.038.045 | Single pack | 1 |
| 120Z5045 | Acoustic hood | HRM094-120, HCP094-120, HCP090-120 | Single pack | 1 |

IP54 upgrade kit


| Code n° | Description | Application | Packaging | Pack size |
|----------|--|--|-----------|-----------|
| 118U0056 | IP54 upgrade kit for round terminal box | HRM, HLM, HCM, HRP, HLP, HCP, HRH, HLH, HLJ, HHP HHP015.019.021.026 | Multipack | 6 |
| 118U0057 | IP54 upgrade kit for square terminal box | HRM, HLM, HCM, HRP, HLP, HCP, HRH, HLH, HLJ, HHP HHP030.038.045 | Multipack | 6 |

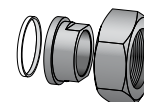
Terminal box and accessories


| Code n° | Description | Application | Packaging | Pack Size |
|----------|-------------------------------------|--|-----------|-----------|
| 120Z5015 | Round terminal box (P & T version) | HRM, HLM, HCM, HRP, HLP, HCP, HRH, HLH, HLJ, HHP | Multipack | 10 |
| 120Z5018 | Square terminal box (C & Q version) | HRM, HLM, HCM, HRP, HLP, HCP, HRH, HLH, HLJ, HHP | Multipack | 10 |


MLZ & MLM range

LLZ range
Solder sleeve adapter sets


| Code n° | Description | Application | Packaging | Pack size |
|----------|---|------------------------|-----------|-----------|
| 120Z0126 | Solder sleeve adapter set (1"1/4 Rotolock, 3/4" ODF), (1" Rotolock, 1/2" ODF) | MLZ/MLM015.019.021.026 | Multipack | 6 |
| 120Z0127 | Solder sleeve adapter set (1"1/4 Rotolock, 7/8" ODF), (1" Rotolock, 1/2" ODF) | MLZ/MLM030.038.042.045 | Multipack | 6 |
| 120Z0128 | Solder sleeve adapter set (1"1/4 Rotolock, 7/8" ODF), (1"1/4 Rotolock, 3/4" ODF) | MLZ/MLM048 | Multipack | 6 |
| 120Z0129 | Solder sleeve adapter set (1"3/4 Rotolock, 1"1/8 ODF), (1"1/4 Rotolock, 7/8" ODF) | MLZ/MLM058.066.076 | Multipack | 6 |

Rotolock nuts and sleeves kit


| Code n° | Description | Application | Packaging | Pack size |
|----------|--|--|-----------|-----------|
| 120Z5074 | Rotolock nuts 1"1/4 and 1" with sleeves and gaskets | MLZ/MLM015.019.021.026.030.038.042.045 | Multipack | 6 |
| 120Z5076 | 2 rotolock nuts 1"1/4 and 1" with sleeves and gaskets | MLZ/MLM048 | Multipack | 6 |
| 120Z5075 | Rotolock nuts 1"1/4 and 1"3/4 with sleeves and gaskets | MLZ/MLM058.066.076 | Multipack | 6 |

Magnetic discharge non return valve


| Code n° | Description | Application | Packaging | Pack size |
|----------|-------------------------------------|--------------------------|-----------|-----------|
| 120Z5046 | Magnetic discharge non return valve | MLZ/MLM058.066.076 & LLZ | Multipack | 6 |

Run capacitors for PSC wiring


| Code n° | Description | Application | Packaging | Pack size |
|----------|---------------------------|--------------------|-----------|-----------|
| 8173231 | Run capacitor 440V, 40 µF | MLZ/MLM015 | Multipack | 10 |
| 120Z0051 | Run capacitor 440V, 70 µF | MLZ/MLM019.021.026 | Multipack | 10 |
| 8173233 | Run capacitor 440V, 50 µF | MLZ/MLM030 | Multipack | 10 |
| 8173234 | Run capacitor 440V, 55 µF | MLZ/MLM038.042 | Multipack | 10 |

Start capacitors for CSR wiring



| Code n° | Description | Application | Packaging | Pack size |
|----------|---|------------------------|-----------|-----------|
| 120Z0399 | Start capacitor 250V, 145-175 µF | MLZ/MLM015.019.021.026 | Multipack | 10 |
| 120Z0040 | Start capacitor 250V, 161-193 µF | MLZ/MLM030 | Multipack | 10 |
| 8173001 | Start capacitor 330V, 88-108 µF (98 µF) | MLZ/MLM038.042 | Multipack | 10 |

Starting relays for CSR wiring



| Code n° | Description | Application | Packaging | Pack size |
|----------|------------------------|------------------------|-----------|-----------|
| 120Z0393 | Starting relay RVA9CKL | MLZ/MLM015.019.021.026 | Multipack | 10 |
| 120Z0394 | Starting relay RVA3EKL | MLZ/MLM030 | Multipack | 10 |
| 120Z0395 | Starting relay RVA4GKL | MLZ/MLM038.042 | Multipack | 10 |

IP54 upgrade kits



| Code n° | Description | Application | Packaging | Pack size |
|----------|--|--|-----------|-----------|
| 118U0056 | IP54 upgrade kit for round terminal box | MLZ/MLM015.019.021.026 | Multipack | 6 |
| 118U0057 | IP54 upgrade kit for square terminal box | MLZ/MLM030.038.042.045.058.066.076 All LLZ models | Multipack | 6 |

Mounting kits



| Code n° | Description | Application | Packaging | Pack size |
|----------|---|----------------------------------|-------------|-----------|
| 120Z5005 | Mounting kit for 1 scroll compressor including 4 grommets, 4 sleeves, 4 bolts, 4 washers | MLZ/MLM | Single pack | 1 |
| 120Z5067 | Mounting kit for 1 scroll compressor including 4 grommets, 4 sleeves, 4 bolts, 4 washers, rotolock connection kit for suction, discharge and economizer fitting for 1 scroll compressor including 3 Teflon seals, 2 nuts, 3 sleeves | MLZ/MLM015-045 LLZ013.015.018 | Single pack | 1 |
| 120Z5069 | Mounting kit for 1 scroll compressor including 4 grommets, 4 sleeves, 4 bolts, 4 washers, rotolock connection kit for suction, discharge fitting for 1 scroll compressor including 3 Teflon seals, 2 nuts, 3 sleeves | MLZ/MLM048 | Single pack | 1 |
| 120Z5068 | Mounting kit for 1 scroll compressor including 4 grommets, 4 sleeves, 4 bolts, 4 washers, rotolock connection kit for suction, discharge and economizer fitting for 1 scroll compressor including 3 Teflon seals, 2 nuts, 3 sleeves | MLZ/MLM058-076 LLZ024.033 | Single pack | 1 |
| 120Z0407 | Rigid grommets and washers for tandem / rack assembly. Set for 8 compressors | MLZ/MLM | Single pack | 1 |

Acoustic hoods


| Code n° | Description | Application | Packaging | Pack size |
|----------|---------------|-----------------------------|-------------|-----------|
| 120Z5043 | Acoustic hood | MLZ/MLM015.019.021.026 | Single pack | 1 |
| 120Z5044 | Acoustic hood | MLZ/MLMM030.038.042.045.048 | Single pack | 1 |
| 120Z5045 | Acoustic hood | MLZ/MLM058.066.076 | Single pack | 1 |
| 120Z5052 | Acoustic hood | LLZ013.015.018 | Single pack | 1 |
| 120Z5053 | Acoustic hood | LLZ024.033 | Single pack | 1 |

Terminal box and accessories


| Code n° | Description | Application | Packaging | Pack Size |
|----------|-------------------------------------|------------------------------------|-----------|-----------|
| 120Z5015 | Round terminal box (P & T version) | MLZ/MLM015.019.021.026 | Multipack | 10 |
| 120Z5018 | Square terminal box (C & Q version) | MLZ/MLM030.038.042.045.058.066.076 | Multipack | 10 |

Manifolding service kit


| Code n° | Description | Application | Packaging | Pack Size |
|----------|---|------------------------|-----------|-----------|
| 120Z5073 | Oil equalisation kit including 2 oil sight glass adaptors, rotolock nuts, sleeves and gaskets, feet spacers and washers for 2 compressors | MLZ/MLM015.019.021.026 | Multipack | 6 |



VSH & VZH ranges

Solder sleeve adapter sets



| Code n° | Description | Application | Packaging | Pack size |
|----------|---|---------------------|-----------|-----------|
| 120Z0125 | Solder sleeve adapter set (1"3/4 Rotolock, 1"1/8 ODF), (1"1/4 Rotolock, 7/8" ODF) | VSH088 & VZH088.117 | Multipack | 8 |
| 120Z0405 | Solder sleeve adapter set (1"3/4 Rotolock, 1"3/8 ODF), (1"1/4 Rotolock, 7/8" ODF) | VSH117 | Multipack | 8 |
| 7765028 | Solder sleeve adapter set, (2"1/4 Rotolock, 1"5/8 ODF), (1"3/4 Rotolock, 1"1/8 ODF) | VSH170 & VZH170 | Multipack | 6 |

Discharge thermostats and sensors



| Code n° | Description | Application | Packaging | Pack size |
|----------|--|----------------------|-------------|-----------|
| 120Z0157 | Discharge temperature sensor / converter kit | VSH & VZH all models | Single pack | 1 |
| 120Z0158 | Discharge temperature sensor | VSH & VZH all models | Single pack | 1 |
| 120Z0159 | Discharge temperature converter | VSH & VZH all models | Single pack | 1 |

Coil



| Code n° | Description | Application | Packaging | Pack size |
|----------|-----------------------------|----------------|-------------|-----------|
| 120Z0143 | Coil / 230V | VSH all models | Single pack | 1 |
| 120Z0144 | Coil / 24V | VSH all models | Single pack | 1 |
| 120Z0521 | Coil / 208-240V and adaptor | VZH all models | Single pack | 1 |
| 120Z0522 | Coil / 24V and adaptor | VZH all models | Single pack | 1 |

Valve Body



| Code n° | Description | Application | Packaging | Pack size |
|----------|-------------|----------------------|-------------|-----------|
| 120Z0145 | Valve body | VSH & VZH all models | Single pack | 1 |

Acoustic hoods


| Code n° | Description | Application | Packaging | Pack size |
|----------|---|----------------------|-------------|-----------|
| 120Z0152 | Acoustic hood for Inverter Scroll compressors | VSH088-G/H | Single pack | 1 |
| 120Z0153 | Acoustic hood for Inverter Scroll compressors | VSH117-G/H | Single pack | 1 |
| 120Z0154 | Acoustic hood for Inverter Scroll compressors | VSH170-G/H/J | Single pack | 1 |
| 120Z0155 | Acoustic hood for Inverter Scroll compressors | VSH088-J | Single pack | 1 |
| 120Z0156 | Acoustic hood for Inverter Scroll compressors | VSH117-J | Single pack | 1 |
| 120Z0509 | Acoustic hood for Inverter Scroll compressors | VZH088-G | Single pack | 1 |
| 120Z0510 | Acoustic hood for Inverter Scroll compressors | VZH088-J | Single pack | 1 |
| 120Z0511 | Acoustic hood for Inverter Scroll compressors | VZH088-G manifolding | Single pack | 1 |
| 120Z0512 | Acoustic hood for Inverter Scroll compressors | VZH088-J manifolding | Single pack | 1 |
| 120Z0513 | Acoustic hood for Inverter Scroll compressors | VZH117-G | Single pack | 1 |
| 120Z0514 | Acoustic hood for Inverter Scroll compressors | VZH117-J | Single pack | 1 |
| 120Z0515 | Acoustic hood for Inverter Scroll compressors | VZH117-G manifolding | Single pack | 1 |
| 120Z0516 | Acoustic hood for Inverter Scroll compressors | VZH117-J manifolding | Single pack | 1 |
| 120Z0517 | Acoustic hood for Inverter Scroll compressors | VZH170-G | Single pack | 1 |
| 120Z0519 | Acoustic hood for Inverter Scroll compressors | VZH170-J | Single pack | 1 |
| 120Z0518 | Acoustic hood for Inverter Scroll compressors | VZH170-G manifolding | Single pack | 1 |
| 120Z0520 | Acoustic hood for Inverter Scroll compressors | VZH170-J manifolding | Single pack | 1 |

Mounting kits


| Code n° | Description | Application | Packaging | Pack size |
|----------|---|-------------------------|-------------|-----------|
| 120Z0066 | Mounting kit for 1 scroll compressor. Grommets, sleeves, bolts, washers | VSH088.117 & VZH088.117 | Single pack | 1 |
| 8156138 | Mounting kit for 1 scroll compressor. Grommets, sleeves, bolts, washers | VSH170 & VZH170 | Single pack | 1 |

Terminal boxes and accessories


| Code n° | Description | Application | Packaging | Pack size |
|----------|--|---|-------------|-----------|
| 8173230 | T-block connector 52 x 57 mm, 3 screws H10-32 UNF9.5 | VSH088-G/H.117-G/H & VZH088-G.117-G | Multipack | 10 |
| 8173021 | T block connector 60 x 75 mm | VSH088-J.117-J.170-G/H & VZH088-J.117-J.170-G | Multipack | 10 |
| 8173331 | T block connector 80 x 80 mm | VSH170-J & VZH170-J | Multipack | 10 |
| 120Z0146 | Electrical box | VSH088-G/H.117-G/H & VZH088-G.117-G | Single pack | 1 |
| 120Z0147 | Electrical box | VSH170-G/H/J & VZH170-J | Single pack | 1 |
| 120Z0148 | Electrical box | VSH088-J.117-J VZH088-J.117-J | Single pack | 1 |
| 120Z0538 | Electrical box | VZH170-G | Single pack | 1 |
| 120Z0149 | Electrical box cover | VSH088-G/H.117-G/H & VZH088-G.117-G | Single pack | 1 |
| 120Z0150 | Terminal box cover | VSH170-G/H/J & VZH170-J | Single pack | 1 |
| 120Z0537 | Electrical box cover | VZH170-G | Single pack | 1 |
| 120Z0151 | Electrical box cover | VSH088-J.117-J & VZH088-J.117-J | Single pack | 1 |

LCP's


| Code n° | Description | Application | Packaging | Pack size |
|----------|-----------------|--|-------------|-----------|
| 130B1107 | LCP | Frequency converter / all models | Single pack | 1 |
| 175Z0929 | RS cable to LCP | Frequency converter / VSH, VZH all models | Single pack | 1 |
| 130B1088 | LCP Blind cover | Frequency converter IP20/IP21 / VSH models | Single pack | 1 |
| 130B1077 | LCP Blind cover | Frequency converter IP55/IP66 / VSH models | Single pack | 1 |

Fans


| Code n° | Description | Application | Packaging | Pack size |
|----------|-----------------------|-------------------------|-------------|-----------|
| 130B3563 | Fan 1 (main) IP20 | VSH088 & VZH088 | Single pack | 1 |
| 130B3699 | Fan 1 (main) IP20 | VSH117.170 & VZH117.170 | Single pack | 1 |
| 130B3407 | Fan 1 (main) IP55 | VSH088 & VZH088 | Single pack | 1 |
| 130B3406 | Fan 1 (main) IP55 | VSH117.170 & VZH117.170 | Single pack | 1 |
| 130B3440 | Fan 2 (internal) IP55 | VSH088 & VZH088 | Single pack | 1 |
| 130B3441 | Fan 2 (internal) IP55 | VSH117.170 & VZH117.170 | Single pack | 1 |

Control card


| Code n° | Description | Application | Packaging | Pack size |
|----------|--------------|----------------------------------|-------------|-----------|
| 130B1109 | Control card | Frequency converter / all models | Single pack | 1 |

Power cards


| Code n° | Description | Application | Packaging | Pack size |
|----------|-----------------|-------------|-------------|-----------|
| 130B1942 | Power card IP20 | 15 kW | Single pack | 1 |
| 130B1943 | Power card IP20 | 18,5 kW | Single pack | 1 |
| 130B1944 | Power card IP20 | 22 kW | Single pack | 1 |
| 130B1842 | Power card IP55 | 15 kW | Single pack | 1 |
| 130B1823 | Power card IP55 | 18,5 kW | Single pack | 1 |
| 130B1825 | Power card IP55 | 22 kW | Single pack | 1 |

Accessory bags


| Code n° | Description | Application | Packaging | Pack size |
|----------|--------------------|-----------------------------|-------------|-----------|
| 130B0980 | Accessory bag IP20 | VSH088.117 & VZH088-G | Single pack | 1 |
| 130B1301 | Accessory bag IP20 | VZH088-J.117-G.170-G | Single pack | 1 |
| 130B1300 | Accessory bag IP20 | VSH170 & VZH117-J.170-J | Single pack | 1 |
| 130B2060 | Accessory bag IP55 | VSH088.117 & VZH088-G | Single pack | 1 |
| 130B0046 | Accessory bag IP55 | VZH088-J.117-J.170-J | Single pack | 1 |
| 130B2061 | Accessory bag IP55 | VSH088.117 & VZH117-G.170-G | Single pack | 1 |

Relays card


| Code n° | Description | Application | Packaging | Pack size |
|----------|-------------|--------------------------------|-------------|-----------|
| 130B1110 | Relays card | Frequency converter VZH models | Single pack | 1 |

Converters


| Code n° | Description | Application | Packaging | Pack size |
|----------|-----------------------|---------------------|-------------|-----------|
| 192L0929 | RS232/RS485 Converter | Frequency converter | Single pack | 1 |
| 192L0930 | USB/RS485 Converter | Frequency converter | Single pack | 1 |

Switch mode power modules


| Code n° | Description | Application | Packaging | Pack size |
|----------|--------------------------------|-------------|-------------|-----------|
| 130B1843 | Switch. mode power module IP55 | 18,5 kW | Single pack | 1 |
| 130B1844 | Switch. mode power module IP55 | 22 kW | Single pack | 1 |


MT / MTZ & NTZ ranges
Single phase PSC starting kits


| Code n° | Description | Application | Packaging | Pack size |
|---------|---|--|-----------|-----------|
| 7701025 | Permanent capacitors 440V, 15 µF, 10 µF | MT(Z)18-1 & NTZ 048-1 | Multipack | 4 |
| 7701026 | Permanent capacitors 440V, 20 µF, 10 µF | MT(Z)18-5, 22-5, 28-5 & NTZ 048-5, 068-5 | Multipack | 4 |
| 7701035 | Permanent capacitors 440V, 30 µF, 15 µF | MT(Z)22-1, 44-1, 45-1, 50-1, 51-1, 50-5 & NTZ096-1, 108-1, 136-1 | Multipack | 4 |
| 7701151 | Permanent capacitors 440V, 25 µF, 25 µF | MT(Z)28-1 & NTZ 068-1 | Multipack | 4 |
| 7701152 | Permanent capacitors 440V, 25 µF, 20 µF | MT(Z)32-1, 36-1 | Multipack | 4 |
| 7701024 | Permanent capacitors 440V, 25 µF, 10 µF | MT(Z)32-5, 36-5 | Multipack | 4 |
| 7701153 | Permanent capacitors 440V, 35 µF, 20 µF | MT(Z)40-1, 56-1 | Multipack | 4 |
| 7701037 | Permanent capacitors 440V, 30 µF, 25 µF | MT(Z)64-1, 65-1 | Multipack | 6 |

Single phase CSR starting kits


| Code n° | Description | Application | Packaging | Pack size |
|----------|---|--|---------------|-----------|
| 120Z0028 | Relay + Capacitors: run (40 µF), start (98 µF) | MPZ 038-1, 048-1, 054-1, 038-5, 048-5, 054-5 | Multipack | 4 |
| 120Z0044 | Relay + Capacitors: run (40 µF), start (98 µF) | MPZ 038-1, 048-1, 054-1, 038-5, 048-5, 054-5 | Industry pack | 48 |
| 120Z0033 | Relay + Capacitors: run (45 µF), start (98 µF) | MPZ 061-1, 068-1, 061-5, 068-5 | Multipack | 4 |
| 120Z0045 | Relay + Capacitors: run (45 µF), start (98 µF) | MPZ 061-1, 068-1, 061-5, 068-5 | Industry pack | 48 |
| 7701021 | Relay + Capacitors: run (15 + 10 µF), start (98 µF) | MT(Z)18-1 & NTZ 048-1 | Multipack | 4 |
| 7701022 | Relay + Capacitors: run (20 + 10 µF), start (98 µF) | MT(Z)18-5, 22-5, 28-5 & NTZ 048-5, 068-5 | Multipack | 4 |
| 7701038 | Relay + Capacitors: run (30 + 15 µF), start (98 µF) | MT(Z)22-1 | Multipack | 4 |
| 7701154 | Relay + Capacitors: run (25 + 25 µF), start (140 µF) | MT(Z)28-1 & NTZ 068-1 | Multipack | 4 |
| 7701155 | Relay + Capacitors: run (25 + 20 µF), start (98 µF) | MT(Z)32-1, 36-1 | Multipack | 4 |
| 7701023 | Relay + Capacitors: run (25 + 10 µF), start (140 µF) | MT(Z)32-5, 36-5 | Multipack | 4 |
| 7701156 | Relay + Capacitors: run (35 + 20 µF), start (98 µF) | MT(Z)40-1 | Multipack | 4 |
| 7701042 | Relay + Capacitors: run (30 + 15 µF), start (140 µF) | MT(Z)44-1, 45-1, 50-1, 51-1 & NTZ096-1, 108-1, 136-1 | Multipack | 6 |
| 7701043 | Relay + Capacitors: run (30 + 20 µF), start (98 + 98 µF) | MT(Z)56-1, 57-1 | Multipack | 6 |
| 7701044 | Relay + Capacitors: run (30 + 25 µF), start (98 + 140 µF) | MT(Z)64-1, 65-1 | Multipack | 6 |

Single phase CSR starting kits, prewired box


| Code n° | Description | Application | Packaging | Pack size |
|----------|--|--|-------------|-----------|
| 120Z0029 | Relay + Capacitors: run (40 µF), start (98 µF) | MPZ038-1, 048-1, 054-1, 038-5, 048-5, 054-5 | Single pack | 1 |
| 7701028 | Relay + Capacitors: run (20 + 10 µF), start (98 µF) | MT(Z)18-5, 22-5, 28-5 & NTZ 048-5, 068-5 | Single pack | 1 |
| 7701147 | Relay + Capacitors: run (30 + 15 µF), start (98 µF) | MT(Z)22-1 | Single pack | 1 |
| 7701148 | Relay + Capacitors: run (25 + 25 µF), start (140 µF) | MT(Z)28-1 & NTZ 068-1 | Single pack | 1 |
| 7701149 | Relay + Capacitors: run (25 + 20 µF), start (98 µF) | MT(Z)32-1, 36-1 & MPZ 061-1, 068-1, 061-5, 068-5 | Single pack | 1 |
| 7701029 | Relay + Capacitors: run (25 + 10 µF), start (140 µF) | MT(Z)32-5, 36-5 | Single pack | 1 |
| 7701049 | Relay + Capacitors: run (30 + 15 µF), start (140 µF) | MT(Z)44-1, 45-1, 50-1, 51-1 & NTZ096-1, 108-1, 136-1 | Single pack | 1 |

3 phase soft start equipment


| Code n° | Description | Application | Packaging | Pack size |
|---------|-------------------------------------|--------------|-------------|-----------|
| 7705006 | Electronic soft start kit, MCI 15 C | MT(Z)18-81 | Single pack | 1 |
| 7705007 | Electronic soft start kit, MCI 25 C | MT(Z)100-160 | Single pack | 1 |

Relays and capacitors


| Code n° | Description | Application | Packaging | Pack size |
|---------|---|---|-------------|-----------|
| 8173022 | Starting relay type RVA6AMKL | All Single pack phase models (code 1 & 5) | Single pack | 1 |
| 8173037 | Run capacitor 440V, 10 µF | PSC & CSR starting kits | Multipack | 10 |
| 8173038 | Run capacitor 440V, 15 µF | PSC & CSR starting kits | Multipack | 10 |
| 8173039 | Run capacitor 440V, 20 µF | PSC & CSR starting kits | Multipack | 10 |
| 8173040 | Run capacitor 440V, 25 µF | PSC & CSR starting kits | Multipack | 10 |
| 8173041 | Run capacitor 440V, 30 µF | PSC & CSR starting kits | Multipack | 10 |
| 8173042 | Run capacitor 440V, 35 µF | PSC & CSR starting kits | Multipack | 10 |
| 8173231 | Run capacitor 440V, 40 µF | PSC & CSR starting kits | Multipack | 10 |
| 8173232 | Run capacitor 440V, 45 µF | PSC & CSR starting kits | Multipack | 10 |
| 8173233 | Run capacitor 440V, 50 µF | PSC & CSR starting kits | Multipack | 10 |
| 8173234 | Run capacitor 440V, 55 µF | PSC & CSR starting kits | Multipack | 10 |
| 8173001 | Start capacitor 330V, 88-108 µF (98 µF) | CSR starting kits | Multipack | 10 |
| 8173002 | Start capacitor 330V, 140 µF | CSR starting kits | Multipack | 10 |

Acoustic hoods


| Code n° | Description | Application | Packaging | Pack size |
|----------|------------------------------|---------------------------|-------------|-----------|
| 120Z0471 | Acoustic hood for 1 cyl | MT(Z)18-40 & NTZ048-068 | Single pack | 1 |
| 120Z0575 | Slim acoustic hood for 1 cyl | | Single pack | 1 |
| 120Z0472 | Acoustic hood for 2 cyl | MT(Z)44-81 & NTZ096-136 | Single pack | 1 |
| 120Z0576 | Slim acoustic hood for 2 cyl | | Single pack | 1 |
| 120Z0473 | Acoustic hood for 4 cyl | | Single pack | 1 |
| 120Z0577 | Slim acoustic hood for 2 cyl | MT(Z)100-160 & NTZ215-271 | Single pack | 1 |

Mounting kits


| Code n° | Description | Application | Packaging | Pack size |
|----------|--|----------------------------|-------------|-----------|
| 8156001 | Mounting kit 1 & 2 cyl; Ebox: 80 x 96 mm; Sleeves 5/8" - 1/2" | MT/MTZ18-81 & NTZ048-136 | Single pack | 1 |
| 8156007 | Mounting kit for 4 cylinder compressor & MS, including 4 grommets, 4 bolts Ebox: 96 x 115 mm; Sleeves 1"1/8 - 3/4" | MT/MTZ100-160 & NTZ215-271 | Single pack | 1 |
| 120Z0031 | Mounting kit & Ebox cover MPZ | MPZ038-068 | Single pack | 1 |

Terminal boxes, covers & T-block connectors


| Code n° | Description | Application | Packaging | Pack size |
|----------|--|---|---------------|-----------|
| 120Z0032 | Cover; clamp; cable gland | MPZ038-068 | Multipack | 10 |
| 8156134 | Cover 80 x 96 mm ; clamp | MT/MTZ18-44(1),18-73(3), 18-81(4), 18-50(5), 18-40(6), 32-56(7), 22-80(9) & NTZ048-136 (except 136-1) | Industry pack | 10 |
| 8173230 | T-block connector 52 x 57 mm, 3 screws H10-32 UNF9.5 | MT/MTZ50-64(1), 80-160(3), 100-160(4), 44-160(6), 100-160(7), 100-160(9) & NTZ136-1, NTZ215-271 | Multipack | 10 |
| 8156135 | Service kit for terminal box 96 x 115 mm, including 1 cover, 1 clamp | MT/MTZ50-64(1), 80-160(3), 100-160(4), 44-160(6), 100-160(7), 100-160(9) & NTZ136-1, NTZ215-271 | Industry pack | 10 |

Tandem kits


| Code n° | Description | Application | Packaging | Pack size |
|---------|-------------|-----------------------------|-------------|-----------|
| 7702004 | Tandem kit | MTM/MTZ200-250 & NTZ430-542 | Single pack | 1 |
| 7702005 | Tandem kit | MTM/MTZ288-320 | Single pack | 1 |



VTZ range

Acoustic hoods



| Code n° | Description | Application | Packaging | Pack size |
|----------|---------------------------------------|----------------|-------------|-----------|
| 120Z0471 | Acoustic hood for 1 cyl | VTZ038.054 | Single pack | 1 |
| 120Z0472 | Acoustic hood for 2 cyl | VTZ086.121 | Single pack | 1 |
| 7755202 | Acoustic hood for 2 cyl (UL Approved) | VTZ086.121 | Single pack | 1 |
| 120Z0473 | Acoustic hood for 4 cyl | VTZ171.215.242 | Single pack | 1 |

Mounting kits



| Code n° | Description | Application | Packaging | Pack size |
|---------|--|--------------------|-------------|-----------|
| 8156001 | Mounting kit 1 & 2 cyl; Ebox: 80 x 96 mm; Sleeves 5/8" - 1/2" | VTZ038.054.086.121 | Single pack | 1 |
| 8156007 | Mounting kit for 4 cylinder compressor & MS, including 4 grommets, 4 bolts Ebox: 96 x 115 mm; Sleeves 1"1/8 - 3/4" | VTZ171.215.242 | Single pack | 1 |

Terminal boxes, covers & T-block connectors



| Code n° | Description | Application | Packaging | Pack size |
|----------|--|----------------|-------------|-----------|
| 8173230 | T-block connector 52 x 57 mm, 3 screws H10-32 UNF9.5 | All VTZ models | Multipack | 10 |
| 120Z0149 | Electrical box cover + clamp | All VTZ models | Single pack | 1 |

LCP's



| Code n° | Description | Application | Packaging | Pack size |
|----------|-----------------|----------------------------------|-------------|-----------|
| 130B1107 | LCP | Frequency converter / all models | Single pack | 1 |
| 175Z0929 | RS cable to LCP | Frequency converter / all models | Single pack | 1 |
| 130B1088 | LCP Blind cover | Frequency converter IP20/IP21 | Single pack | 1 |
| 130B1077 | LCP Blind cover | Frequency converter IP55/IP66 | Single pack | 1 |

Control card


| Code n° | Description | Application | Packaging | Pack size |
|----------|--------------|----------------------------------|-------------|-----------|
| 130B1109 | Control card | Frequency converter / all models | Single pack | 1 |

Relays card


| Code n° | Description | Application | Packaging | Pack size |
|----------|-------------|---------------------|-------------|-----------|
| 130B1110 | Relays card | Frequency converter | Single pack | 1 |

Converters


| Code n° | Description | Application | Packaging | Pack size |
|----------|-----------------------|---------------------|-------------|-----------|
| 192L0929 | RS232/RS485 Converter | Frequency converter | Single pack | 1 |
| 192L0930 | USB/RS485 Converter | Frequency converter | Single pack | 1 |

| Code n° | Description | SH/SM/SY/ SZ/WSH/ PSH | H/HHP | MLZ/ MLM/LLZ | VSH/VZH | MT/MTZ/ NTZ | VTZ | Packaging | Pack size |
|---------|---|-----------------------------|--------|-----------------|---------|----------------|---------|-------------|-----------|
| 7701021 | Relay + Capacitors: run (15 + 10 µF), start (98 µF) | | | | | page 23 | | Multipack | 4 |
| 7701022 | Relay + Capacitors: run (20 + 10 µF), start (98 µF) | | | | | page 23 | | Multipack | 4 |
| 7701023 | Relay + Capacitors: run (25 + 10 µF), start (140 µF) | | | | | page 23 | | Multipack | 4 |
| 7701024 | Permanent capacitors 440V, 25 µF, 10 µF | | | | | page 23 | | Multipack | 4 |
| 7701025 | Permanent capacitors 440V, 15 µF, 10 µF | | | | | page 23 | | Multipack | 4 |
| 7701026 | Permanent capacitors 440V, 20 µF, 10 µF | | | | | page 23 | | Multipack | 4 |
| 7701028 | Relay + Capacitors: run (20 + 10 µF), start (98 µF) | | | | | page 24 | | Single pack | 1 |
| 7701029 | Relay + Capacitors: run (25 + 10 µF), start (140 µF) | | | | | page 24 | | Single pack | 1 |
| 7701035 | Permanent capacitors 440V, 30 µF, 15 µF | | | | | page 23 | | Multipack | 4 |
| 7701037 | Permanent capacitors 440V, 30 µF, 25 µF | | | | | page 23 | | Multipack | 6 |
| 7701038 | Relay + Capacitors: run (30 + 15 µF), start (98 µF) | | | | | page 23 | | Multipack | 4 |
| 7701042 | Relay + Capacitors: run (30 + 15 µF), start (140 µF) | | | | | page 23 | | Multipack | 6 |
| 7701043 | Relay + Capacitors: run (30 + 20 µF), start (98 + 98 µF) | | | | | page 23 | | Multipack | 6 |
| 7701044 | Relay + Capacitors: run (30 + 25 µF), start (98 + 140 µF) | | | | | page 23 | | Multipack | 6 |
| 7701049 | Relay + Capacitors: run (30 + 15 µF), start (140 µF) | | | | | page 24 | | Single pack | 1 |
| 7701147 | Relay + Capacitors: run (30 + 15 µF), start (98 µF) | | | | | page 24 | | Single pack | 1 |
| 7701148 | Relay + Capacitors: run (25 + 25 µF), start (140 µF) | | | | | page 24 | | Single pack | 1 |
| 7701149 | Relay + Capacitors: run (25 + 20 µF), start (98 µF) | | | | | page 24 | | Single pack | 1 |
| 7701151 | Permanent capacitors 440V, 25 µF, 25 µF | | | | | page 23 | | Multipack | 4 |
| 7701152 | Permanent capacitors 440V, 25 µF, 20 µF | | | | | page 23 | | Multipack | 4 |
| 7701153 | Permanent capacitors 440V, 35 µF, 20 µF | | | | | page 23 | | Multipack | 4 |
| 7701154 | Relay + Capacitors: run (25 + 25 µF), start (140 µF) | | | | | page 23 | | Multipack | 4 |
| 7701155 | Relay + Capacitors: run (25 + 20 µF), start (98 µF) | | | | | page 23 | | Multipack | 4 |
| 7701156 | Relay + Capacitors: run (35 + 20 µF), start (98 µF) | | | | | page 23 | | Multipack | 4 |
| 7702004 | Tandem kit | | | | | page 25 | | Single pack | 1 |
| 7702005 | Tandem kit | | | | | page 25 | | Single pack | 1 |
| 7703004 | Valve set, V06 (1"~1/2"), V01 (1"~3/8") | | | | | page 6 | | Multipack | 4 |
| 7703005 | Valve set, V09 (1"1/4~5/8"), V06 (1"~1/2") | | | | | page 6 | | Multipack | 4 |
| 7703006 | Valve set, V07 (1"3/4~7/8"), V04 (1"1/4~3/4") | | | | | page 6 | | Multipack | 6 |
| 7703008 | Valve set, V02(1"3/4~1"1/8), V05(1"1/4~7/8") | page 6 | page 6 | page 6 | | | | Multipack | 6 |
| 7703009 | Valve set, V02 (1"3/4~1"1/8), V04 (1"1/4~3/4") | page 6 | | | | page 6 | | Multipack | 6 |
| 7703010 | Valve set, V08 (2"1/4~1"3/8), V07 (1"3/4~7/8") | page 6 | | | | | | Multipack | 6 |
| 7703011 | Angle adapter set, C06 (1"~1/2"), C01 (1"~3/8") | | | | | page 6 | page 6 | Multipack | 4 |
| 7703012 | Angle adapter set, C09 (1"1/4~5/8"), C06 (1"~1/2") | | | | | page 6 | page 6 | Multipack | 4 |
| 7703013 | Angle adapter set, C07 (1"3/4~7/8"), C04 (1"1/4~3/4") | | | | | page 6 | page 6 | Multipack | 6 |
| 7703014 | Angle adapter set, C02 (1"3/4~1"1/8), C04 (1"1/4~3/4") | | | | | page 6 | page 6 | Multipack | 6 |
| 7703251 | Restrictor + suction/discharge Tees | page 12 | | | | | | Single pack | 1 |
| 7703371 | Restrictor + suction/discharge Tees | page 12 | | | | | | Single pack | 1 |
| 7703383 | Valve set, V03 (2"1/4~1"5/8), V02 (1"3/4~1"1/8) | page 6 | | | | | | Multipack | 4 |
| 7703384 | Restrictor + suction/discharge Tees | page 12 | | | | | | Single pack | 1 |
| 7703390 | Restrictor + suction/discharge Tees | page 12 | | | | | | Single pack | 1 |
| 7703392 | Valve set, V10 (1"3/4~1"3/8), V05 (1"1/4~7/8") | page 6 | | | | | | Multipack | 6 |
| 7705006 | Electronic soft start kit, MCI 15 C | page 9 | | | | page 24 | | Single pack | 1 |
| 7705007 | Electronic soft start kit, MCI 25 C | page 9 | | | | page 24 | | Single pack | 1 |
| 7750007 | MS-SM tandem replacement kit | page 8 | | | | | | Single pack | 1 |
| 7750009 | Discharge thermostat kit | page 8 | page 8 | page 8 | page 8 | page 8 | page 8 | Multipack | 10 |
| 7754001 | Mineral oil, 160P, 2 litre can | page 8 | | | | page 8 | | Multipack | 8 |
| 7754002 | Mineral oil, 160P, 5 litre can | page 8 | | | | page 8 | | Multipack | 4 |
| 7754019 | POE lubricant, 160PZ, 1 litre can | | | | | page 8 | page 8 | Multipack | 12 |
| 7754023 | POE lubricant, 160SZ, 1 litre can | page 8 | | | page 8 | | | Multipack | 12 |
| 7754121 | POE lubricant, 320SZ, 1 litre can | page 8 | | | | | | Multipack | 12 |
| 7755007 | Acoustic hood for scroll compressor | page 10 | | | | | | Single pack | 1 |
| 7755010 | Acoustic hood for scroll compressor | page 10 | | | | | | Single pack | 1 |
| 7755011 | Acoustic hood for scroll compressor | page 10 | | | | | | Single pack | 1 |
| 7755016 | Acoustic hood for scroll compressor | page 10 | | | | | | Single pack | 1 |
| 7755017 | Acoustic hood for scroll compressor | page 10 | | | | | | Single pack | 1 |
| 7755022 | Acoustic hood for scroll compressor | page 10 | | | | | | Single pack | 1 |
| 7755202 | Acoustic hood for 2 cyl (UL Approved) | | | | | | page 26 | Single pack | 1 |
| 7765005 | Solder sleeve adapter set (1"3/4 Rotolock, 1"1/8 ODF), (1"1/4 Rotolock, 3/4" ODF) | page 9 | | | | | | Multipack | 6 |
| 7765006 | Solder sleeve adapter set (1"3/4 Rotolock, 1"3/8 ODF), (1"1/4 Rotolock, 7/8" ODF) | page 9 | | | | | | Multipack | 6 |
| 7765012 | Suction header restrictor | page 11 | | | | | | Single pack | 1 |
| 7765013 | Suction header restrictor | page 11 | | | | | | Single pack | 1 |
| 7765025 | Suction header restrictor | page 11 | | | | | | Single pack | 1 |
| 7765027 | Suction header restrictor | page 11 | | | | | | Single pack | 1 |
| 7765028 | Solder sleeve adapter set, (2"1/4 Rotolock, 1"5/8 ODF), (1"3/4 Rotolock, 1"1/8 ODF) | page 9 | | | page 19 | | | Multipack | 6 |
| 7773013 | Belt type crankcase heater, 54W, 400V, UL | | | | | page 7 | | Multipack | 4 |
| 7773106 | Belt type crankcase heater, 54W, 230V, CE mark, UL | | | | | page 7 | | Multipack | 4 |
| 7773107 | Belt type crankcase heater, 65W, 230V, CE mark, UL | page 7 | | | page 7 | page 7 | page 7 | Multipack | 6 |
| 7773108 | Belt type crankcase heater, 75W, 230V, CE mark, UL | page 7 | | | page 7 | page 7 | page 7 | Multipack | 6 |
| 7773109 | Belt type crankcase heater, 65W, 110V, CE mark, UL | page 7 | | | page 7 | page 7 | page 7 | Multipack | 6 |
| 7773110 | Belt type crankcase heater, 75W, 110V, CE mark, UL | page 7 | | | page 7 | page 7 | page 7 | Multipack | 6 |
| 7773112 | Oil equalisation adapter kit for trio mounting. Includes oil fittings, gaskets & adapters (copper pipes not included) | page 13 | | | | | | Single pack | 1 |

| Code n° | Description | SH/SM/SY/ SZ/WSH/ PSH | H/HHP | MLZ/ MLM/LLZ | VSH/VZH | MT/MTZ/ NTZ | VTZ | Packaging | Pack size |
|---------|--|-----------------------------|--------|-----------------|---------|----------------|--------|---------------|-----------|
| 7773117 | Belt type crankcase heater, 65W, 400V, CE mark, UL | page 7 | | | page 7 | page 7 | page 7 | Multipack | 6 |
| 7773118 | Belt type crankcase heater, 75W, 400V, CE mark, UL | page 7 | | | page 7 | page 7 | page 7 | Multipack | 6 |
| 7773121 | Belt type crankcase heater, 130W, 110V, CE mark, UL | page 7 | | | | | | Multipack | 4 |
| 7773122 | Belt type crankcase heater, 130W, 230V, CE mark, UL | page 7 | | | | | | Multipack | 4 |
| 7773123 | Belt type crankcase heater, 130W, 400V, CE mark, UL | page 7 | | | | | | Multipack | 4 |
| 7777011 | Restrictors, Tees, sleeves, gaskets & oil fittings for quadro mounting (copper pipes not included) | page 12 | | | | | | Single pack | 1 |
| 7777012 | Restrictors, Tees, sleeves, gaskets & oil fittings for trio mounting (copper pipes not included) | page 12 | | | | | | Single pack | 1 |
| 7777016 | Restrictors, sleeves, gaskets & oil fittings for trio mounting (copper pipes & Tees not included) | page 12 | | | | | | Single pack | 1 |
| 7777017 | Restrictors, sleeves, gaskets & oil fittings for quadro mounting (copper pipes & Tees not included) | page 12 | | | | | | Single pack | 1 |
| 7777023 | Suction washer | page 11 | | | | | | Single pack | 1 |
| 7777036 | Suction washer | page 11 | | | | | | Single pack | 1 |
| 7777037 | Suction washer, grommets, sleeve for oil connect | page 12 | | | | | | Single pack | 1 |
| 7777038 | Suction washer, grommets, sleeve for oil connect | page 12 | | | | | | Single pack | 1 |
| 7777039 | Suction washer, grommets, sleeve for oil connect | page 12 | | | | | | Single pack | 1 |
| 7777040 | Suction washer, grommets, sleeve for oil connect | page 12 | | | | | | Single pack | 1 |
| 7777041 | Suction washer, grommets, sleeve for oil connect | page 12 | | | | | | Single pack | 1 |
| 7777042 | Suction washer, rigid spacer, sleeve for oil connect | page 12 | | | | | | Single pack | 1 |
| 7777043 | Suction washer, rigid spacer, sleeve for oil connect | page 12 | | | | | | Single pack | 1 |
| 7777044 | Suction washer, rigid spacer, sleeve for oil connect | page 12 | | | | | | Single pack | 1 |
| 7777045 | Mounting kit for 1 scroll compressor including 4 hexagonal rigid grommets, 4 sleeves, 4 bolts, 4 washers | page 10 page 13 | | | | | | Single pack | 1 |
| 7777048 | Suction washer, grommets, sleeve for oil connect | page 12 | | | | | | Single pack | 1 |
| 7777049 | Suction washer, grommets, sleeve for oil connect | page 12 | | | | | | Single pack | 1 |
| 7777050 | Suction washer, rigid spacer, sleeve for oil connect | page 12 | | | | | | Single pack | 1 |
| 7777051 | Suction washer, rigid spacer, sleeve for oil connect | page 12 | | | | | | Single pack | 1 |
| 7777052 | Suction washer, rigid spacer, sleeve for oil connect | page 12 | | | | | | Single pack | 1 |
| 7777053 | Suction washer, rigid spacer, sleeve for oil connect | page 12 | | | | | | Single pack | 1 |
| 7777054 | Suction washer, rigid spacer, sleeve for oil connect | page 12 | | | | | | Single pack | 1 |
| 7953001 | Rotolock nut, 1" | | page 5 | page 5 | | page 5 | page 5 | Industry pack | 50 |
| 7953002 | Rotolock nut, 1 1/4" | | page 5 | page 5 | | page 5 | page 5 | Industry pack | 50 |
| 7953003 | Rotolock nut, 1 3/4" | page 5 | page 5 | page 5 | | page 5 | page 5 | Industry pack | 50 |
| 7953004 | Solder sleeve, P01, (1" Rotolock, 3/8" ODF) | | | | | page 5 | page 5 | Industry pack | 50 |
| 7953005 | Solder sleeve, P02, (1 3/4" Rotolock, 1 1/8" ODF) | page 5 | page 5 | page 5 | | page 5 | page 5 | Industry pack | 50 |
| 7953006 | Solder sleeve, P03, (2 1/4" Rotolock, 1 5/8" ODF) | page 5 | | | | | | Industry pack | 50 |
| 7953007 | Solder sleeve, P04, (1 1/4" Rotolock, 3/4" ODF) | | page 5 | page 5 | | page 5 | page 5 | Industry pack | 50 |
| 7953008 | Rotolock connector, P05, (1 1/4" Rotolock, 7/8" ODS) | | page 5 | page 5 | | page 5 | | Industry pack | 50 |
| 7953009 | Solder sleeve, P06, (1" Rotolock, 1/2" ODF) | | page 5 | page 5 | | page 5 | page 5 | Industry pack | 50 |
| 7953010 | Solder sleeve, P07, (1 3/4" Rotolock, 7/8" ODF) | page 5 | page 5 | page 5 | | page 5 | page 5 | Industry pack | 50 |
| 7953011 | Solder sleeve, P09, (1 1/4" Rotolock, 5/8" ODF) | | | | | page 5 | page 5 | Industry pack | 50 |
| 7956001 | Gasket, G01, 1" | | page 5 | page 5 | | page 5 | page 5 | Industry pack | 50 |
| 7956002 | Gasket, G09, 1 1/4" | | page 5 | page 5 | | page 5 | page 5 | Industry pack | 50 |
| 7956003 | Gasket, G07, 1 3/4" | page 5 | page 5 | page 5 | | page 5 | page 5 | Industry pack | 50 |
| 7956004 | Gasket, G08, 2 1/4" | page 5 | | | | | | Industry pack | 50 |
| 7956005 | Gasket for oil sight glass (white teflon) | page 8 | page 8 | page 8 | page 8 | page 8 | page 8 | Industry pack | 50 |
| 7968003 | Rotolock valve, V01, (1" Rotolock, 3/8" ODF) | | | | | page 6 | | Industry pack | 50 |
| 7968004 | Rotolock valve, V06, (1" Rotolock, 1/2" ODF) | | page 6 | page 6 | | page 6 | | Industry pack | 50 |
| 7968005 | Rotolock valve, V09, (1 1/4" Rotolock, 5/8" ODF) | | | | | page 6 | | Industry pack | 50 |
| 7968006 | Rotolock valve, V04, (1 1/4" Rotolock, 3/4" ODF) | page 6 | page 6 | page 6 | | page 6 | | Industry pack | 50 |
| 7968007 | Rotolock valve, V05, (1 1/4" Rotolock, 7/8" ODF) | page 6 | page 6 | page 6 | | | | Industry pack | 36 |
| 7968008 | Rotolock valve, V07, (1 3/4" Rotolock, 7/8" ODF) | | page 6 | page 6 | | page 6 | | Industry pack | 36 |
| 7968009 | Rotolock valve, V02, (1 3/4" Rotolock, 1 1/8" ODF) | page 6 | page 6 | page 6 | | | | Industry pack | 24 |
| 7968010 | Rotolock valve, V08, (2 1/4" Rotolock, 1 3/8" ODF) | page 6 | | | | | | Industry pack | 18 |
| 7968011 | Rotolock valve, V03, (2 1/4" Rotolock, 1 5/8" ODF) | page 6 | | | | | | Industry pack | 18 |
| 7973001 | Belt type crankcase heater, 65W, 110V, CE mark, UL | page 7 | | | page 7 | page 7 | page 7 | Industry pack | 50 |
| 7973002 | Belt type crankcase heater, 65W, 230V, CE mark, UL | page 7 | | | page 7 | page 7 | page 7 | Industry pack | 50 |
| 7973005 | Belt type crankcase heater, 75W, 230V, CE mark, UL | page 7 | | | page 7 | page 7 | page 7 | Industry pack | 50 |
| 7973007 | Belt type crankcase heater, 130W, 230V, CE mark, UL | page 7 | | | | | | Industry pack | 50 |
| 7973008 | Discharge thermostat kit | page 8 | page 8 | page 8 | page 8 | page 8 | page 8 | Industry pack | 50 |
| 8153003 | Solder sleeve, P10, (1 3/4" Rotolock, 1 3/8" ODF) | page 5 | | | | | | Multipack | 10 |
| 8153004 | Solder sleeve, P02, (1 3/4" Rotolock, 1 1/8" ODF) | page 5 | page 5 | page 5 | | page 5 | page 5 | Multipack | 10 |
| 8153005 | Solder sleeve, P08, (2 1/4" Rotolock, 1 3/8" ODF) | page 5 | | | | | | Multipack | 10 |
| 8153006 | Solder sleeve, P03, (2 1/4" Rotolock, 1 5/8" ODF) | page 5 | | | | | | Multipack | 10 |
| 8153007 | Solder sleeve, P06, (1" Rotolock, 1/2" ODF) | | page 5 | page 5 | | page 5 | page 5 | Multipack | 10 |
| 8153008 | Solder sleeve, P04, (1 1/4" Rotolock, 3/4" ODF) | | page 5 | page 5 | | page 5 | page 5 | Multipack | 10 |
| 8153010 | Solder sleeve, P01, (1" Rotolock, 3/8" ODF) | | | | | page 5 | | Multipack | 10 |
| 8153011 | Solder sleeve, P09, (1 1/4" Rotolock, 5/8" ODF) | | | | | page 5 | page 5 | Multipack | 10 |
| 8153012 | Rotolock connector, P05, (1 1/4" Rotolock, 7/8" ODS) | | page 5 | page 5 | | page 5 | | Multipack | 10 |
| 8153013 | Solder sleeve, P07, (1 3/4" Rotolock, 7/8" ODF) | page 5 | page 5 | page 5 | | page 5 | page 5 | Multipack | 10 |
| 8153122 | Rotolock nut, 1" | | page 5 | page 5 | | page 5 | page 5 | Multipack | 10 |
| 8153123 | Rotolock nut, 1 1/4" | | page 5 | page 5 | | page 5 | page 5 | Multipack | 10 |
| 8153124 | Rotolock nut, 1 3/4" | | page 5 | page 5 | | page 5 | page 5 | Multipack | 10 |
| 8153126 | Rotolock nut, 2 1/4" | page 5 | | | | | | Multipack | 10 |

| Code n° | Description | SH/SM/SY/ SZ/WSH/ PSH | H/HHP | MLZ/ MLM/LLZ | VSH/VZH | MT/MTZ/ NTZ | VTZ | Packaging | Pack size |
|----------|--|-----------------------------|---------|-----------------|---------|----------------|---------|-------------|-----------|
| 8154001 | Danfoss CC blue spray paint | page 8 | page 8 | page 8 | page 8 | page 8 | page 8 | Single pack | 1 |
| 8156001 | Mounting kit 1 & 2 cyl; Ebox: 80 x 96 mm; Sleeves 5/8" - 1/2" | | | | | page 27 | page 26 | Single pack | 1 |
| 8156003 | Mounting kit for 1 scroll tandem, including 4 rubber grommets | page 10 | | | | | | Single pack | 1 |
| 8156007 | Mounting kit for 4 cylinder compressor & MS, including 4 grommets, 4 bolts Ebox: 96 x 115 mm; Sleeves 1"1/8 - 3/4" | page 10 | | | | page 27 | page 26 | Single pack | 1 |
| 8156009 | Gasket set, 1", 1"1/4, 1"3/4, OSG gaskets black & white | | | | | page 5 | page 5 | Multipack | 10 |
| 8156013 | Gasket set, 1"1/4, 1"3/4, 2"1/4, OSG gaskets black & white | page 5 | page 5 | page 5 | page 5 | | | Multipack | 10 |
| 8156019 | Oil sight glass with gaskets (black & white) | page 8 | | | page 8 | page 8 | page 8 | Multipack | 4 |
| 8156129 | Gasket for oil sight glass (white teflon) | page 8 | | | page 8 | page 8 | page 8 | Multipack | 10 |
| 8156130 | Gasket, G01, 1" | | page 5 | page 5 | | page 5 | page 5 | Multipack | 10 |
| 8156131 | Gasket, G09, 1"1/4 | | page 5 | page 5 | | page 5 | page 5 | Multipack | 10 |
| 8156132 | Gasket, G07, 1"3/4 | page 5 | page 5 | page 5 | | page 5 | page 5 | | |
| 8156133 | Gasket, G08, 2"1/4 | page 5 | | | | | | | |
| 8156134 | Cover 80 x 96 mm ; clamp | | | | | page 25 | | | |
| 8156135 | Service kit for terminal box 96 x 115 mm, including 1 cover, 1 clamp | page 11 | | | | page 25 | | Multipack | 10 |
| 8156138 | Mounting kit for 1 scroll compressor. Grommets, sleeves, bolts, washers | page 10 | | | page 20 | | | Single pack | 1 |
| 8156139 | Terminal box 186 x 198 mm, incl cover | page 11 | | | | | | Single pack | 1 |
| 8156144 | Mounting kit for 1 scroll compressor. Grommets, sleeves | page 10 | | | | | | Single pack | 1 |
| 8156145 | Gasket for oil sight glass (black chloroprene) | | | | | page 8 | | Multipack | 10 |
| 8156147 | Mounting kit for 1 scroll compressor. Grommets, sleeves, bolts, washers, rotolock nuts, solder sleeves, gaskets | page 10 | | | | | | Single pack | 1 |
| 8168004 | Angle adapter, C01 (1" Rotolock, 3/8" ODF) | | | | | page 6 | page 6 | Multipack | 6 |
| 8168005 | Angle adapter, C02 (1"3/4 Rotolock, 1"1/8 ODF) | | page 6 | page 6 | | page 6 | page 6 | Multipack | 6 |
| 8168006 | Angle adapter, C04 (1"1/4 Rotolock, 3/4" ODF) | | page 6 | page 6 | | page 6 | page 6 | Multipack | 6 |
| 8168007 | Angle adapter, C06 (1" Rotolock, 1/2" ODF) | | page 6 | page 6 | | page 6 | page 6 | Multipack | 6 |
| 8168008 | Angle adapter, C07 (1"3/4 Rotolock, 7/8" ODF) | | page 6 | page 6 | | page 6 | page 6 | Multipack | 6 |
| 8168009 | Angle adapter, C09 (1"1/4 Rotolock, 5/8" ODF) | | | | | page 6 | page 6 | Multipack | 6 |
| 8168022 | Rotolock valve, V10, (1"3/4 Rotolock, 1"3/8 ODF) | page 6 | | | | | | Single pack | 1 |
| 8168025 | Rotolock valve, V08, (2"1/4 Rotolock, 1"3/8 ODF) | page 6 | | | | | | Multipack | 6 |
| 8168026 | Rotolock valve, V03, (2"1/4 Rotolock, 1"5/8 ODF) | page 6 | | | | | | Multipack | 6 |
| 8168027 | Rotolock valve, V01, (1" Rotolock, 3/8" ODF) | | | | | page 6 | | Multipack | 6 |
| 8168028 | Rotolock valve, V02, (1"3/4 Rotolock, 1"1/8 ODF) | page 6 | page 6 | page 6 | | page 6 | | Multipack | 6 |
| 8168029 | Rotolock valve, V04, (1"1/4 Rotolock, 3/4" ODF) | page 6 | page 6 | page 6 | | page 6 | | Multipack | 6 |
| 8168030 | Rotolock valve, V05, (1"1/4 Rotolock, 7/8" ODF) | page 6 | page 6 | page 6 | | | | Multipack | 6 |
| 8168031 | Rotolock valve, V06, (1" Rotolock, 1/2" ODF) | | page 6 | page 6 | | page 6 | | Multipack | 6 |
| 8168032 | Rotolock valve, V07, (1"3/4 Rotolock, 7/8" ODF) | | | | | page 6 | | Multipack | 6 |
| 8168033 | Rotolock valve, V09, (1"1/4 Rotolock, 5/8" ODF) | | | | | page 6 | | Multipack | 6 |
| 8169015 | Electronic motor protection module, 24 V AC | page 9 | | | | | | Single pack | 1 |
| 8169016 | Electronic motor protection module, 115/230 V | page 9 | | | | | | Single pack | 1 |
| 8169020 | Electronic motor protection module, 24 V AC | page 9 | | | | | | Single pack | 1 |
| 8169021 | Electronic motor protection module, 230 V | page 9 | | | | | | Single pack | 1 |
| 8173001 | Start capacitor 330V, 88-108 µF (98 µF) | | page 14 | page 17 | | page 24 | | Multipack | 10 |
| 8173002 | Start capacitor 330V, 140 µF | | | | | page 24 | | Multipack | 10 |
| 8173021 | T block connector 60 x 75 mm | page 11 | | | page 20 | | | Multipack | 10 |
| 8173022 | Starting relay type RVA6AMKL | | | | | page 24 | | Single pack | 1 |
| 8173037 | Run capacitor 440V,10 µF | | | | | page 24 | | Multipack | 10 |
| 8173038 | Run capacitor 440V,15 µF | | | | | page 24 | | Multipack | 10 |
| 8173039 | Run capacitor 440V,20 µF | | | | | page 24 | | Multipack | 10 |
| 8173040 | Run capacitor 440V,25 µF | | | | | page 24 | | Multipack | 10 |
| 8173041 | Run capacitor 440V,30 µF | | | | | page 24 | | Multipack | 10 |
| 8173042 | Run capacitor 440V,35 µF | | | | | page 24 | | Multipack | 10 |
| 8173230 | T-block connector 52 x 57 mm, 3 screws H10-32 UNF9.5 | page 11 | | | page 20 | page 25 | page 26 | Multipack | 10 |
| 8173231 | Run capacitor 440V, 40 µF | | page 14 | page 16 | | page 24 | | Multipack | 10 |
| 8173232 | Run capacitor 440V, 45 µF | | | | | page 24 | | Multipack | 10 |
| 8173233 | Run capacitor 440V, 50 µF | | page 14 | page 16 | | page 24 | | Multipack | 10 |
| 8173234 | Run capacitor 440V, 55 µF | | page 14 | page 16 | | page 24 | | Multipack | 10 |
| 8173331 | T block connector 80 x 80 mm | page 11 | | | page 20 | | | Multipack | 10 |
| 037N0401 | Electronic soft start kit, MCI 50 CM | page 9 | | | | | | Single pack | 1 |
| 060G0090 | LP sensor including plug | page 13 | | | | | | Single pack | 1 |
| 060G0008 | HP sensor including plug | page 13 | | | | | | Single pack | 1 |
| 061L4223 | Liquid injections valve coil with cable | page 13 | | | | | | Single pack | 1 |
| 080G0073 | MMIMYK | page 13 | | | | | | Single pack | 1 |
| 080G0075 | RJ11 cable | page 13 | | | | | | Single pack | 1 |
| 080G0294 | MMIGRS | page 13 | | | | | | Single pack | 1 |
| 118U0056 | IP54 upgrade kit for round terminal box | | page 15 | page 17 | | | | Multipack | 6 |
| 118U0057 | IP54 upgrade kit for square terminal box | | page 15 | page 17 | | | | Multipack | 6 |
| 120Z0022 | Acoustic hood for scroll compressor | page 10 | | | | | | Single pack | 1 |

| Code n° | Description | SH/SM/SY/ SZ/WSH/ PSH | H/HHP | MLZ/ MLM/LLZ | VSH/VZH | MT/MTZ/ NTZ | VTZ | Packaging | Pack size |
|----------|--|-----------------------------|---------|-----------------|---------|----------------|---------|---------------|-----------|
| 120Z0028 | Relay + Capacitors: run (40 µF), start (98 µF) | | | | | page 23 | | Multipack | 4 |
| 120Z0029 | Relay + Capacitors: run (40 µF), start (98 µF) | | | | | page 24 | | Single pack | 1 |
| 120Z0031 | Mounting kit & Ebox cover MPZ | | | | | page 27 | | Single pack | 1 |
| 120Z0032 | Cover; clamp; cable gland | | | | | page 25 | | Multipack | 10 |
| 120Z0033 | Relay + Capacitors: run (45 µF), start (98 µF) | | | | | page 23 | | Multipack | 4 |
| 120Z0034 | Acoustic hood for scroll compressor | page 10 | | | | | | Single pack | 1 |
| 120Z0035 | Acoustic hood for scroll compressor | page 10 | | | | | | Single pack | 1 |
| 120Z0038 | Belt type crankcase heater, 65W, 230V, CE mark, UL | page 7 | | | | | | Multipack | 8 |
| 120Z0039 | Belt type crankcase heater, 65W, 400V, CE mark, UL | page 7 | | | page 7 | | | Multipack | 8 |
| 120Z0040 | Start capacitor 250V, 161-193 µF | | page 14 | page 17 | | | | Multipack | 10 |
| 120Z0044 | Relay + Capacitors: run (40 µF), start (98 µF) | | | | | page 23 | | Industry pack | 48 |
| 120Z0045 | Relay + Capacitors: run (45 µF), start (98 µF) | | | | | page 23 | | Industry pack | 48 |
| 120Z0047 | Rotolock nut, 2"1/4 | page 5 | | | | | | Industry pack | 50 |
| 120Z0050 | Run capacitor 440V, 60 µF | | page 14 | | | | | Multipack | 10 |
| 120Z0051 | Run capacitor 440V, 70 µF | | page 14 | page 16 | | | | Multipack | 10 |
| 120Z0055 | Belt type crankcase heater, 40W, 230V, CE mark, UL | | page 7 | | | | | Multipack | 6 |
| 120Z0056 | Belt type crankcase heater, 40W, 400V, CE mark, UL | | page 7 | | | | | Multipack | 6 |
| 120Z0057 | Belt type crankcase heater, 50W, 230V, CE mark, UL | | page 7 | | | | | Multipack | 6 |
| 120Z0058 | Belt type crankcase heater, 50W, 400V, CE mark, UL | | page 7 | | | | | Multipack | 6 |
| 120Z0059 | Belt type Crankcase heaters, 65W, 230V, CE mark, UL | | page 7 | page 7 | | | | Multipack | 6 |
| 120Z0060 | Belt type Crankcase heaters, 65W, 400V, CE mark, UL | | page 7 | page 7 | | | | Multipack | 6 |
| 120Z0066 | Mounting kit for 1 scroll compressor.Grommets, sleeves, bolts, washers | page 10 | | | page 20 | | | Single pack | 1 |
| 120Z0125 | Solder sleeve adapter set (1"3/4 Rotolock, 1"1/8 ODF), (1"1/4 Rotolock, 7/8" ODF) | page 9 | | | page 19 | | | Multipack | 8 |
| 120Z0126 | Solder sleeve adapter set (1"1/4 Rotolock, 3/4" ODF), (1" Rotolock, 1/2" ODF) | | page 14 | page 16 | | | | Multipack | 6 |
| 120Z0127 | Solder sleeve adapter set (1"1/4 Rotolock, 7/8" ODF), (1" Rotolock, 1/2" ODF) | | page 14 | page 16 | | | | Multipack | 6 |
| 120Z0128 | Solder sleeve adapter set (1"1/4 Rotolock, 7/8" ODF), (1"1/4 Rotolock, 3/4" ODF) | | page 14 | page 16 | | | | Multipack | 6 |
| 120Z0129 | Solder sleeve adapter set (1"3/4 Rotolock, 1"1/8 ODF), (1"1/4 Rotolock, 7/8" ODF) | | page 14 | page 16 | | | | Multipack | 6 |
| 120Z0135 | Acoustic hood for scroll compressor | page 10 | | | | | | Single pack | 1 |
| 120Z0140 | Electronic motor protection module, 24 V DC | page 9 | | | | | | Single pack | 1 |
| 120Z0141 | Electronic motor protection module, 24 V DC | page 9 | | | | | | Single pack | 1 |
| 120Z0143 | Coil / 230V | | | | page 19 | | | Single pack | 1 |
| 120Z0144 | Coil / 24V | | | | page 19 | | | Single pack | 1 |
| 120Z0145 | Valve body | | | | page 19 | | | Single pack | 1 |
| 120Z0146 | Electrical box | | | | page 20 | | | Single pack | 1 |
| 120Z0147 | Electrical box | | | | page 20 | | | Single pack | 1 |
| 120Z0148 | Electrical box | | | | page 20 | | | Single pack | 1 |
| 120Z0149 | Electrical box cover + clamp | | | | page 20 | | page 26 | Single pack | 1 |
| 120Z0150 | Terminal box cover | page 11 | | | page 20 | | | Single pack | 1 |
| 120Z0151 | Electrical box cover | | | | page 20 | | | Single pack | 1 |
| 120Z0152 | Acoustic hood for Inverter Scroll compressors | | | | page 20 | | | Single pack | 1 |
| 120Z0153 | Acoustic hood for Inverter Scroll compressors | | | | page 20 | | | Single pack | 1 |
| 120Z0154 | Acoustic hood for Inverter Scroll compressors | | | | page 20 | | | Single pack | 1 |
| 120Z0155 | Acoustic hood for Inverter Scroll compressors | | | | page 20 | | | Single pack | 1 |
| 120Z0156 | Acoustic hood for Inverter Scroll compressors | | | | page 20 | | | Single pack | 1 |
| 120Z0157 | Discharge temperature sensor / converter kit | | | | page 19 | | | Single pack | 1 |
| 120Z0158 | Discharge temperature sensor | | | | page 19 | | | Single pack | 1 |
| 120Z0159 | Discharge temperature converter | | | | page 19 | | | Single pack | 1 |
| 120Z0164 | Oil equalisation adapter. To connect 7/8" tube on 22 mm oil sight glass connection. Includes 1 adapter 22 mm to 7/8", 2 gaskets. | page 13 | | | | | | Single pack | 1 |
| 120Z0165 | Oil equalisation adapter. To connect 1/2" tube on 22 mm oil sight glass connection. Includes 1 adapter 22 mm to 1/2", 2 gaskets. | page 13 | | | | | | Single pack | 1 |
| 120Z0316 | Valve set, V12 (flange ~ 2"1/8), V10(1"3/4~1"3/8) | page 6 | | | | | | Single pack | 1 |
| 120Z0317 | Flange, (Flange, 2"1/8 ODF) (1"3/4" Rotolock, 1"3/8 ODF) | page 9 | | | | | | Single pack | 1 |
| 120Z0320 | Flange type valve, V12 (Flange ~ 2"1/8) | page 6 | | | | | | Single pack | 1 |
| 120Z0322 | Suction header restrictor | page 11 | | | | | | Industry pack | 50 |
| 120Z0323 | Suction header restrictor | page 11 | | | | | | Industry pack | 50 |
| 120Z0324 | Suction header restrictor | page 11 | | | | | | Industry pack | 50 |
| 120Z0353 | Bottom insulation for scroll compressor | page 10 | | | | | | Single pack | 1 |
| 120Z0360 | Surface sump heater + Bottom insulation, 56W, 24V, CE, UL | page 7 | | | | | | Multipack | 6 |
| 120Z0361 | Surface sump heater + Bottom insulation, 48W, 24V, CE, UL | page 7 | | | | | | Multipack | 6 |
| 120Z0364 | Rotolock adapter (1"3/4 Rotolock, 1"1/8 ODF) | page 5 | page 5 | page 5 | page 5 | | | Multipack | 10 |
| 120Z0365 | Rotolock adapter (1" Rotolock, 1/2" ODF) | | page 5 | page 5 | | | | Multipack | 10 |
| 120Z0366 | Rotolock adapter (1"1/4 Rotolock, 3/4" ODF) | page 5 | page 5 | page 5 | | | | Multipack | 10 |
| 120Z0367 | Rotolock adapter (1"1/4 Rotolock, 7/8" ODF) | page 5 | page 5 | page 5 | page 5 | | | Multipack | 10 |

| Code n° | Description | SH/SM/SY/ SZ/WSH/ PSH | H/HHP | MLZ/ MLM/LLZ | VSH/VZH | MT/MTZ/ NTZ | VTZ | Packaging | Pack size |
|----------|--|-----------------------------|---------|-----------------|---------|----------------|---------|---------------|-----------|
| 120Z0372 | Surface sump heater + Bottom insulation, 80W, 230V, CE, UL | page 7 | | | | | | Multipack | 4 |
| 120Z0373 | Surface sump heater + Bottom insulation, 80W, 400V, CE, UL | page 7 | | | | | | Multipack | 4 |
| 120Z0375 | Surface sump heater + Bottom insulation, 80W, 575V, CE, UL | page 7 | | | | | | Multipack | 4 |
| 120Z0376 | Surface sump heater + Bottom insulation, 56W, 230V, CE, UL | page 7 | | | page 7 | | | Multipack | 6 |
| 120Z0377 | Surface sump heater + Bottom insulation, 56W, 400V, CE, UL | page 7 | | | page 7 | | | Multipack | 6 |
| 120Z0378 | Surface sump heater + Bottom insulation, 56W, 460V, CE, UL | page 7 | | | page 7 | | | Multipack | 6 |
| 120Z0379 | Surface sump heater + Bottom insulation, 56W, 575V, CE, UL | page 7 | | | page 7 | | | Multipack | 6 |
| 120Z0380 | Surface sump heater + Bottom insulation, 48W, 230V, CE, UL | page 7 | | | | | | Multipack | 6 |
| 120Z0381 | Surface sump heater + Bottom insulation, 48W, 400V, CE, UL | page 7 | | | | | | Multipack | 6 |
| 120Z0382 | Surface sump heater + Bottom insulation, 48W, 460V, CE, UL | page 7 | | | | | | Multipack | 6 |
| 120Z0383 | Surface sump heater + Bottom insulation, 48W, 575V, CE, UL | page 7 | | | | | | Multipack | 6 |
| 120Z0388 | Surface sump heater, 80W, 24V, CE, UL | page 7 | | | page 7 | | | Multipack | 8 |
| 120Z0389 | Surface sump heater, 80W, 230V, CE, UL | page 7 | | | page 7 | | | Multipack | 8 |
| 120Z0390 | Surface sump heater, 80W, 400V, CE, UL | page 7 | | | page 7 | | | Multipack | 8 |
| 120Z0391 | Surface sump heater, 80W, 460V, CE, UL | page 7 | | | page 7 | | | Multipack | 8 |
| 120Z0393 | Starting relay RVA9CKL | | page 15 | page 17 | | | | Multipack | 10 |
| 120Z0394 | Starting relay type RVA3EKL | | page 15 | page 17 | | | | Multipack | 10 |
| 120Z0395 | Starting relay RVA4GKL | | page 15 | page 17 | | | | Multipack | 10 |
| 120Z0399 | Start capacitor 250V, 145-175 µF | | page 14 | page 17 | | | | Multipack | 10 |
| 120Z0402 | Surface sump heater, 80W, 575V, CE, UL | page 7 | | | page 7 | | | Multipack | 8 |
| 120Z0403 | Valve set, V02(1"3/4~1"1/8), V05(1"1/4~7/8") | page 6 | page 6 | page 6 | | | | Multipack | 8 |
| 120Z0405 | Solder sleeve adapter set (1"3/4 Rotolock, 1"3/8 ODF), (1"1/4 Rotolock, 7/8" ODF) | page 9 | | | page 19 | | | Multipack | 8 |
| 120Z0407 | Rigid grommets and washers for tandem / rack assembly. Set for 8 compressors | | | page 17 | | | | Single pack | 1 |
| 120Z0413 | Terminal box cover | page 11 | | | | | | Single pack | 1 |
| 120Z0430 | Oil fittings & adapters for quadro mounting (copper pipes not included) | page 13 | | | | | | Single pack | 1 |
| 120Z0431 | Rotolock adapter (1"3/4 Rotolock, 1"3/8 ODF) | page 5 | | | page 5 | | | Multipack | 10 |
| 120Z0432 | Rotolock adapter (2"1/4 Rotolock, 1"5/8 ODF) | page 5 | | | page 5 | | | Multipack | 10 |
| 120Z0458 | Terminal box 210 x 190 incl. cover | page 11 | | | | | | Single pack | 1 |
| 120Z0459 | PTC heater 27W | | | | | page 8 | page 8 | Multipack | 10 |
| 120Z0460 | PTC heater 27W | | | | | page 8 | page 8 | Industry pack | 50 |
| 120Z0462 | Terminal box 210 x 190 incl. cover and module wiring For 258 x 208 terminal box replacement | page 11 | | | | | | Single pack | 1 |
| 120Z0464 | Belt type crankcase heater, 75W, 460V, CE mark, UL | page 7 | | | page 7 | page 7 | page 7 | Multipack | 6 |
| 120Z0465 | Belt type crankcase heater, 75W, 575V, CE mark, UL | page 7 | | | page 7 | page 7 | page 7 | Multipack | 6 |
| 120Z0466 | Belt type crankcase heater, 65W, 460V, CE mark, UL | page 7 | | | page 7 | page 7 | page 7 | Multipack | 6 |
| 120Z0467 | Belt type crankcase heater, 65W, 575V, CE mark, UL | page 7 | | | page 7 | page 7 | page 7 | Multipack | 6 |
| 120Z0471 | Acoustic hood for 1 cyl | | | | | page 24 | page 26 | Single pack | 1 |
| 120Z0472 | Acoustic hood for 2 cyl | | | | | page 24 | page 26 | Single pack | 1 |
| 120Z0473 | Acoustic hood for 4 cyl | | | | | page 24 | page 26 | Single pack | 1 |
| 120Z0478 | Can Bus cable with cable glands | page 13 | | | | | | Single pack | 1 |
| 120Z0479 | Can Bus cable with cable glands | page 13 | | | | | | Single pack | 1 |
| 120Z0482 | DGT sensor with cable | page 13 | | | | | | Single pack | 1 |
| 120Z0483 | Terminal box with 230V OCS | page 11 | | | | | | Single pack | 1 |
| 120Z0484 | Terminal box with 24V OCS | page 11 | | | | | | Single pack | 1 |
| 120Z0485 | Terminal box cover for OCS version | page 11 | | | | | | Single pack | 1 |
| 120Z0486 | OCS connectors | page 11 | | | | | | Single pack | 1 |
| 120Z0487 | Liquid injection valve body | page 13 | | | | | | Single pack | 1 |
| 120Z0495 | Mounting kit for 1 scroll compressor including 4 triangle rigid spacers, 4 sleeves, 4 bolts, 4 washers | page 10 | | | | | | Single pack | 1 |
| 120Z0504 | Solder sleeve adapter set, (2"1/8 Rotolock, 1"5/8 ODF), (1"3/4 Rotolock, 1"3/8 ODF) | page 9 | | | | | | Single pack | 1 |
| 120Z0509 | Acoustic hood for Inverter Scroll compressors | | | | page 20 | | | Single pack | 1 |
| 120Z0510 | Acoustic hood for Inverter Scroll compressors | | | | page 20 | | | Single pack | 1 |
| 120Z0511 | Acoustic hood for Inverter Scroll compressors | | | | page 20 | | | Single pack | 1 |
| 120Z0512 | Acoustic hood for Inverter Scroll compressors | | | | page 20 | | | Single pack | 1 |
| 120Z0513 | Acoustic hood for Inverter Scroll compressors | | | | page 20 | | | Single pack | 1 |
| 120Z0514 | Acoustic hood for Inverter Scroll compressors | | | | page 20 | | | Single pack | 1 |
| 120Z0515 | Acoustic hood for Inverter Scroll compressors | | | | page 20 | | | Single pack | 1 |
| 120Z0516 | Acoustic hood for Inverter Scroll compressors | | | | page 20 | | | Single pack | 1 |
| 120Z0517 | Acoustic hood for Inverter Scroll compressors | | | | page 20 | | | Single pack | 1 |
| 120Z0518 | Acoustic hood for Inverter Scroll compressors | | | | page 20 | | | Single pack | 1 |
| 120Z0519 | Acoustic hood for Inverter Scroll compressors | | | | page 20 | | | Single pack | 1 |
| 120Z0520 | Acoustic hood for Inverter Scroll compressors | | | | page 20 | | | Single pack | 1 |

| Code n° | Description | SH/SM/SY/ SZ/WSH/ PSH | H/HHP | MLZ/ MLM/LLZ | VSH/VZH | MT/MTZ/ NTZ | VTZ | Packaging | Pack size |
|----------|---|-----------------------------|---------|-----------------|---------|----------------|---------|-------------|-----------|
| 120Z0521 | Coil / 208-240V and adaptor | | | | page 19 | | | Single pack | 1 |
| 120Z0522 | Coil / 24V and adaptor | | | | page 19 | | | Single pack | 1 |
| 120Z0529 | Terminal box | page 11 | | | | | | Single pack | 1 |
| 120Z0530 | Control board | page 11 | | | | | | Single pack | 1 |
| 120Z0531 | Terminal box cover | page 11 | | | | | | Single pack | 1 |
| 120Z0532 | T block connector | page 11 | | | | | | Single pack | 1 |
| 120Z0533 | T block connector | page 11 | | | | | | Single pack | 1 |
| 120Z0534 | Discharge temperature sensor PT100 | page 13 | | | | | | Single pack | 1 |
| 120Z0535 | Liquid injection valve body | page 13 | | | | | | Single pack | 1 |
| 120Z0536 | Liquid injections valve coil with cable | page 13 | | | | | | Single pack | 1 |
| 120Z0537 | Electrical box cover | | | | page 20 | | | Single pack | 1 |
| 120Z0538 | Electrical box | | | | page 20 | | | Single pack | 1 |
| 120Z0547 | Valve set, V03 (2"1/4~1"5/8), V10 (1"3/4~1"3/8) | page 6 | | | | | | Multipack | 4 |
| 120Z0550 | Suction washer, grommets, sleeve for oil connect | page 12 | | | | | | Single pack | 1 |
| 120Z0551 | Suction washer, grommets, sleeve for oil connect | page 12 | | | | | | Single pack | 1 |
| 120Z0563 | Terminal box with 230V OCS | page 11 | | | | | | Single pack | 1 |
| 120Z0564 | Terminal box with 24V OCS | page 11 | | | | | | Single pack | 1 |
| 120Z0565 | Terminal box with 230V OCS | page 11 | | | | | | Single pack | 1 |
| 120Z0566 | Terminal box with 24V OCS | page 11 | | | | | | Single pack | 1 |
| 120Z0567 | Terminal box with 230V OCS | page 11 | | | | | | Single pack | 1 |
| 120Z0568 | Terminal box with 24V OCS | page 11 | | | | | | Single pack | 1 |
| 120Z0569 | Suction washer, grommets, sleeve for oil connect | page 12 | | | | | | Single pack | 1 |
| 120Z0571 | POE lubricant, 160SZ, 2.5 litre can | page 8 | | | page 8 | | | Multipack | 4 |
| 120Z0572 | POE lubricant, 320SZ, 2.5 litre can | page 8 | | | | | | Multipack | 4 |
| 120Z0573 | POE lubricant, 160PZ, 2.5 litre can | | | | | page 8 | page 8 | Multipack | 4 |
| 120Z0575 | Slim acoustic hood for 1 cyl | | | | | page 24 | | Single pack | 1 |
| 120Z0576 | Slim acoustic hood for 2 cyl | | | | | page 24 | | Single pack | 1 |
| 120Z0577 | Slim acoustic hood for 2 cyl | | | | | page 24 | | Single pack | 1 |
| 120Z0578 | Suction washer, grommets, sleeve for oil connect | page 12 | | | | | | Single pack | 1 |
| 120Z0579 | Acoustic hood for scroll compressor | page 10 | | | | | | Single pack | 1 |
| 120Z5005 | Mounting kit for 1 scroll compressor including 4 grommets, 4 sleeves, 4 bolts, 4 washers | | page 15 | page 17 | | | | Single pack | 1 |
| 120Z5012 | Belt type crankcase heater, 70W, 460V, CE mark, UL | | page 7 | page 7 | | | | Multipack | 4 |
| 120Z5013 | Belt type crankcase heater, 70W, 575V, CE mark, UL | | page 7 | page 7 | | | | Single pack | 1 |
| 120Z5015 | Round terminal box (P & T version) | | page 15 | page 18 | | | | Multipack | 10 |
| 120Z5017 | Mounting grommet | | page 15 | | | | | Single pack | 1 |
| 120Z5018 | Square terminal box (C & Q version) | | page 15 | page 18 | | | | Multipack | 10 |
| 120Z5034 | PVE lubricant, 320HV (FVC68D), 1 litre can | | page 8 | page 8 | | | | Single pack | 1 |
| 120Z5038 | Belt type crankcase heater, 40W, 460V, CE mark, UL | | page 7 | | | | | Multipack | 6 |
| 120Z5039 | Belt type crankcase heater, 40W, 575V, CE mark, UL | | page 7 | | | | | Multipack | 6 |
| 120Z5040 | Belt type crankcase heater, 70W, 240V, CE mark, UL | | | page 7 | | | | Multipack | 6 |
| 120Z5041 | Belt type crankcase heater, 55/70W, 400/460V, CE mark, UL | | | page 7 | | | | Multipack | 6 |
| 120Z5042 | Belt type crankcase heater, 70W, 575V, CE mark, UL | | | page 7 | | | | Multipack | 4 |
| 120Z5043 | Acoustic hood | | page 15 | page 18 | | | | Single pack | 1 |
| 120Z5044 | Acoustic hood | | page 15 | page 18 | | | | Single pack | 1 |
| 120Z5045 | Acoustic hood | | page 15 | page 18 | | | | Single pack | 1 |
| 120Z5046 | Magnetic discharge non return valve | | | page 16 | | | | Multipack | 6 |
| 120Z5052 | Acoustic hood | | | page 18 | | | | Single pack | 1 |
| 120Z5053 | Acoustic hood | | | page 18 | | | | Single pack | 1 |
| 120Z5067 | Mounting kit for 1 scroll compressor including 4 grommets, 4 sleeves, 4 bolts, 4 washers, rotolock connection kit for suction, discharge and economizer fitting for 1 scroll compressor including 3 Teflon seals, 2 nuts, 3 sleeves | | | page 17 | | | | Single pack | 1 |
| 120Z5068 | Mounting kit for 1 scroll compressor including 4 grommets, 4 sleeves, 4 bolts, 4 washers, rotolock connection kit for suction, discharge and economizer fitting for 1 scroll compressor including 3 Teflon seals, 2 nuts, 3 sleeves | | | page 17 | | | | Single pack | 1 |
| 120Z5069 | Mounting kit for 1 scroll compressor including 4 grommets, 4 sleeves, 4 bolts, 4 washers, rotolock connection kit for suction, discharge fitting for 1 scroll compressor including 3 Teflon seals, 2 nuts, 3 sleeves | | | page 17 | | | | Single pack | 1 |
| 120Z5073 | Oil equalisation kit including 2 oil sight glass adaptors, rotolock nuts, sleeves and gaskets, feet spacers and washers for 2 compressors | | | page 8 | | | | Multipack | 6 |
| 120Z5074 | Rotolock nuts 1"1/4 and 1" with sleeves and gaskets | | | page 16 | | | | Multipack | 6 |
| 120Z5075 | Rotolock nuts 1"1/4 and 1"3/4 with sleeves and gaskets | | | page 16 | | | | Multipack | 6 |
| 120Z5076 | 2 rotolock nuts 1"1/4 and 1" with sleeves and gaskets | | | page 16 | | | | Multipack | 6 |
| 130B0046 | Accessory bag IP55 | | | | page 21 | | | Single pack | 1 |
| 130B0980 | Accessory bag IP20 | | | | page 21 | | | Single pack | 1 |
| 130B1077 | LCP Blind cover | | | | page 20 | | page 27 | Single pack | 1 |
| 130B1088 | LCP Blind cover | | | | page 20 | | page 27 | Single pack | 1 |
| 130B1107 | LCP | | | | page 20 | | page 27 | Single pack | 1 |

| Code n° | Description | SH/SM/SY/ SZ/WSH/ PSH | H/HHP | MLZ/ MLM/LLZ | VSH/VZH | MT/MTZ/ NTZ | VTZ | Packaging | Pack size |
|----------|--|-----------------------------|-------|-----------------|---------|----------------|---------|-------------|-----------|
| 130B1109 | Control card | | | | page 21 | | page 27 | Single pack | 1 |
| 130B1110 | Relays card | | | | page 21 | | page 27 | Single pack | 1 |
| 130B1300 | Accessory bag IP20 | | | | page 21 | | | Single pack | 1 |
| 130B1301 | Accessory bag IP20 | | | | page 21 | | | Single pack | 1 |
| 130B1823 | Power card IP55 | | | | page 21 | | | Single pack | 1 |
| 130B1825 | Power card IP55 | | | | page 21 | | | Single pack | 1 |
| 130B1842 | Power card IP55 | | | | page 21 | | | Single pack | 1 |
| 130B1843 | Switch. mode power module IP55 | | | | page 22 | | | Single pack | 1 |
| 130B1844 | Switch. mode power module IP55 | | | | page 22 | | | Single pack | 1 |
| 130B1942 | Power card IP20 | | | | page 21 | | | Single pack | 1 |
| 130B1943 | Power card IP20 | | | | page 21 | | | Single pack | 1 |
| 130B1944 | Power card IP20 | | | | page 21 | | | Single pack | 1 |
| 130B2060 | Accessory bag IP55 | | | | page 21 | | | Single pack | 1 |
| 130B2061 | Accessory bag IP55 | | | | page 21 | | | Single pack | 1 |
| 130B3406 | Fan 1 (main) IP55 | | | | page 21 | | | Single pack | 1 |
| 130B3407 | Fan 1 (main) IP55 | | | | page 21 | | | Single pack | 1 |
| 130B3440 | Fan 2 (internal) IP55 | | | | page 21 | | | Single pack | 1 |
| 130B3441 | Fan 2 (internal) IP55 | | | | page 21 | | | Single pack | 1 |
| 130B3563 | Fan 1 (main) IP20 | | | | page 21 | | | Single pack | 1 |
| 130B3699 | Fan 1 (main) IP20 | | | | page 21 | | | Single pack | 1 |
| 174G5205 | Electronic soft starter MCD 201-055-T6-CVI | page 9 | | | | | | Single pack | 1 |
| 175Z0929 | RS cable to LCP | | | | page 20 | | page 27 | Single pack | 1 |
| 192L0929 | RS232/RS485 Converter | | | | page 22 | | page 27 | Single pack | 1 |
| 192L0930 | USB/RS485 Converter | | | | page 22 | | page 27 | Single pack | 1 |



Danfoss Commercial Compressors is a worldwide manufacturer of compressors and condensing units for refrigeration and HVAC applications. With a wide range of high quality and innovative products we help your company to find the best possible energy efficient solution that respects the environment and reduces total life cycle costs.

We have 40 years of experience within the development of hermetic compressors which has brought us amongst the global leaders in our business, and positioned us as distinct variable speed technology specialists. Today we operate from engineering and manufacturing facilities spread across three continents.



Danfoss Inverter scroll compressors



Danfoss Air Conditioning scroll compressors



Danfoss Heat Pump scroll compressors



Maneurop® Inverter reciprocating compressors



Danfoss Refrigeration scroll compressors



Maneurop® Reciprocating Compressors



Optyma™ & Optyma Plus™ Condensing Units



Light commercial reciprocating compressors (manufactured by Secop)

Our products can be found in a variety of applications such as rooftops, chillers, residential air conditioners, heatpumps, coldrooms, supermarkets, milk tank cooling and industrial cooling processes.

Danfoss Commercial Compressors <http://cc.danfoss.com>

member of:



www.asercom.org

Danfoss can accept no responsibility for possible errors in catalogues, brochures and other printed material. Danfoss reserves the right to alter its products without notice. This also applies to products already on order provided that such alterations can be made without subsequential changes being necessary in specifications already agreed. All trademarks in this material are property of the respective companies. Danfoss and the Danfoss logotype are trademarks of Danfoss A/S. All rights reserved.